

annual report 2025





**MESSAGE FROM OUR PRESIDENT ..... 2**



**MANAGEMENT REPORT ..... 4**

Highlights of the year .....	4
Key figures .....	7



**CORPORATE INFORMATION ..... 8**

Our people .....	8
The fight against corruption .....	12
Society .....	12
Environment .....	20
Innovation .....	21
Contribution to the SDGs .....	24



**FEATURED ACTIVITIES OF THE YEAR ..... 28**

Roads .....	28
Operation and maintenance management .....	29
Sustainable mobility .....	30
Rail design and construction supervision .....	31
Metropolitan systems .....	32
Airports .....	33
Ports .....	34
Hydraulic infrastructure .....	35
Architecture and building .....	36
Urban development .....	37
Environmental Quality and Consulting .....	38
Energy .....	39
Supporting financial institutions in development programmes .....	40



**WORLD PRESENCE ..... 41**

Permanent office network .....	41
--------------------------------	----

## Message from our President



Dear shareholders, clients, colleagues and friends:

The 2025 financial year has been a year of great achievements for TYP SA, at the same time marked by moments of deep sadness. First and foremost, I would like to remember our colleagues Javier Martínez Espinar and Pablo López Fuentes, whose talent, dedication and humanity contributed decisively to making TYP SA the great company it is today. Their memory will remain with us forever.

Throughout this year, we have continued to enjoy international growth and consolidation. A particularly significant milestone has been the joining of the Irish company Clifton Scannell Emerson Associates (CSEA), a prestigious civil and structural engineering firm based in Dublin, to the TYP SA Group. This integration consolidates our presence in Ireland and strengthens our position in high-growth sectors, such as the design and development of data centres.

From a financial perspective, 2025 has once again been an exceptional year for the Group. We have achieved record figures in revenue, new contracts awarded, back-log and results.

Revenue reached €421 million, representing a 6% increase on the previous year. New contracts awarded have grown to €485 million, 7% more than in the

previous financial year, whilst the back-log stands at €527 million, an increase of 13%. Profit before tax reached €55.48 million, exceeding the already exceptional result of the previous year.

These results are the fruit of the work of a team that continues to grow. Our workforce now stands at nearly 4,300 professionals, further strengthening our local presence in key markets, particularly in Asia and Europe.

Our clients continue to rate the quality of our services very highly. According to satisfaction surveys, they consider it certain or very likely that they will entrust TYP SA with future projects again and have rated our work as very good.

During this financial year, we have maintained our position as a leading firm in the field of mobility and transport. Among the numerous projects undertaken, the following stand out: the extension of the Yonge North line of the Toronto Metro; our involvement in various works for the California High Speed overhead catenary system and track design; the feasibility study for the extension of Line 1 of the Cairo Metro; project management and construction supervision at the new port of Vadhvan in India; the detailed engineering of the Avenida Begonias viaduct in Lima; and the detailed design and support services during the construction of the Yellow Line of the Stockholm Metro.

We have also been extensively involved in water risk management, hydrological planning and energy projects linked to the water cycle. In Spain and Peru, we have participated in the review, updating and implementation of flood risk management plans in various river basins. We have also been involved in the engineering of several reversible hydroelectric power plant projects.

In the field of non-conventional water resources, we carried out desalination and water reuse projects in various international markets. In the United Kingdom, we are involved in a framework contract for the development of the preliminary design and technical consultancy during the design-build of two desalination plants in Norfolk and Lincolnshire. Furthermore, in Saudi Arabia, we provide supervision services for desalination and wastewater treatment plant concessions, developed under public-private partnership schemes, a programme that is one of the most ambitious on a global scale.

In the buildings and cities sector, we continue to expand our international operations. In Spain, we are carrying out the design and construction management for a 10 MW data centre in Barcelona. In the Netherlands, we were involved in the development of two data centres in Amsterdam. We are also making progress on the detailed design for the IREN Sur Oncology Hospital in Arequipa (Peru). In Saudi Arabia, we elaborated the master plan and infrastructure design for a new 44.2 km<sup>2</sup> military-industrial city (MODOM) and participated in the design for the high-performance sports city in Medina.

We are also continuing to expand our presence in the field of infrastructure operation and maintenance. Our subsidiary Rauros has achieved significant successes in the management of operations and maintenance of infrastructures in Mexico, Peru and Chile.

In the energy sector, we continued to participate in projects of great significance. We can highlight our owner's engineering services for the GECAMA hybrid plant in Cuenca, the largest project of its kind in Spain, which integrates an existing wind farm with a new photovoltaic plant and a battery storage system. In Morocco, we provided technical assistance to the NOOR ATLAS photovoltaic project, comprising six solar plants with a total capacity of 234 MW. In Saudi Arabia, we continued to consolidate our leading position through our involvement in three major wind farms totalling 4.2 GW of capacity and six photovoltaic plants with a total capacity of 11 GW. In Guyana, we are developing the detailed design for 229 km of transmission lines and 8 electrical substations for the Demerara-Berbice interconnected system.

During 2025, we have also strengthened our commitment to innovation and digitalisation. Artificial intelligence has become a key priority for improving productivity and knowledge management within the organisation. Among the initiatives developed, the AI Plan 2025 stands out, marking a turning point in the corporate adoption of artificial intelligence platforms and agents aimed at automating processes in our operations.

The TYP SA Foundation for Development has continued its valuable work at Lake Albert University in the Democratic Republic of Congo. In the 2025–2026 academic year, the student intake of 487 was consolidated, with significant collaboration from the Polytechnic University of Madrid. The Foundation has also participated in various projects in Zambia, Senegal and Madagascar.

The international context presents new uncertainties arising from geopolitical tensions and recent conflicts in various regions of the world. However, despite this complex environment, we remain fully confident in the future. The world has an enormous need for sustainable, resilient and high-quality infrastructure, and therefore for the engineering services we offer.

We can rely on the strength of TYP SA and our ability to tackle complex situations, as demonstrated by the excellent results achieved in recent years. However, above all, we can count on the attitude, talent and commitment that set our professionals apart.

To all of them, and to those who place their trust in our work every day, I would like to express my sincere gratitude.

Yours faithfully,

**PABLO BUENO TOMÁS**  
TYP SA Group President and CEO

# Management report

## UNITED STATES AND CANADA

Strong investment growth in energy production and transport, water, defense, and infrastructure sectors in the United States.

**12%** of revenue  
**237** employees  
**3** offices in United States.  
**1** office in Canada

Strong momentum for the infrastructure sector as a driver of economic growth in Canada.



Toronto metro, Canada

## SPANISH-SPEAKING LATIN AMERICA

Peru leads the region in preparing PPP projects, and major public infrastructure tenders are activated in Chile.

**18%** of revenue  
**1,047** employees  
**8** offices  
**1** laboratory

First contracts under Mexico's new rail plan.



Corredor Sur, Panama

## HIGHLIGHTS OF THE YEAR

### MARKET ACTIVITY

(€ million)

REVENUE

**420.70**  
 (+6%)

CONTRACTS AWARDED

**485.05**  
 (+7%)

BACKLOG

**526.98**  
 (+13%)

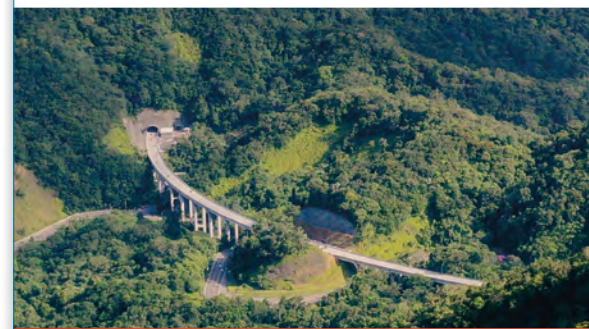
"We design infrastructure to improve people's lives."

## BRAZIL

Growing demand for water resource planning and urban drainage projects.

**6%** of revenue  
**463** employees  
**2** offices

New tenders for roads, railways, and the expansion of urban mobility in São Paulo.



Dos Tamoios Motorway, Brazil

## SPAIN

Stabilisation of public tender volumes.

**24%** of revenue  
**1,616** employees  
**16** offices  
**3** Environmental laboratories  
**1** materials laboratory  
**1** harbour laboratory

Revenue growth in the current financial year.



Santiago Bernabéu Stadium, Madrid

### REST OF EUROPE

Significant entry into the UK water sector and expansion of activities in ports, energy, and airports..

**19%** of revenue  
**294** employees  
**6** offices

New contracts awarded to our Irish subsidiary, CSEA, in road, urban mobility, and buildings sectors..



Stockholm metro, Sweden

### AFRICA

Projects ongoing in 33 countries across the continent.

**4%** of revenue  
**93** employees  
**3** offices

Particularly significant is our involvement in the region's major railway projects.



Boulenouar wind farm, Mauritania

### MIDDLE EAST

Focus and momentum on renewable energy projects in Saudi Arabia.

**12%** of revenue  
**128** employees  
**3** offices

New opportunities in infrastructure development in Oman and Egypt.



King Khalid Airport, Riyadh, Saudi Arabia

### ASIA & THE PACIFIC

Significant investment in infrastructure in India, where we are active in rail, port and renewable energy projects.

**5%** of revenue  
**346** employees  
**5** offices

New opportunities in areas of rail and ports, in Australia.



Pamban vertical lift railway bridge, India

## KEY FIGURES. Consolidated data and Group figures (in € million).

REVENUE	2021	2022	2023	2024	2025	2025 (USD)
<b>TOTAL</b>	<b>266.93</b>	<b>325.13</b>	<b>350.09</b>	<b>396.34</b>	<b>420.70</b>	<b>494.32</b>
United States and Canada	34.34	31.48	34.36	42.68	52.82	62.06
Spanish-speaking Latin America	56.79	75.59	58.67	77.23	74.71	87.78
Brazil	10.00	15.37	18.00	19.20	23.57	27.69
Spain	53.36	60.55	66.49	88.99	102.45	120.38
Europe (except Spain)	38.55	55.27	67.34	61.40	78.79	92.58
Africa	14.89	17.65	16.36	13.27	15.54	18.26
Middle East	30.60	28.68	53.87	62.32	49.98	58.73
Asia and the Pacific	28.40	40.54	35.00	31.25	22.84	26.84
CONTRACT AWARDS	2021	2022	2023	2024	2025	2025 (USD)
<b>TOTAL</b>	<b>280.14</b>	<b>350.91</b>	<b>401.93</b>	<b>453.07</b>	<b>485.05</b>	<b>569.93</b>
United States and Canada	41.99	35.05	37.27	49.28	64.48	75.76
Spanish-speaking Latin America	69.11	65.62	80.46	77.61	95.66	112.40
Brazil	7.15	16.04	22.34	20.87	23.00	27.03
Spain	59.49	72.56	86.50	109.44	105.22	123.63
Europe (except Spain)	29.98	60.31	74.73	78.99	82.14	96.51
Africa	13.22	23.04	14.96	15.87	20.53	24.12
Middle East	19.08	46.72	57.28	65.24	48.21	56.65
Asia and the Pacific	40.12	31.57	28.39	35.77	45.81	53.83
BACKLOG	2021	2022	2023	2024	2025	2025 (USD)
<b>TOTAL</b>	<b>330.37</b>	<b>362.77</b>	<b>403.12</b>	<b>465.31</b>	<b>526.98</b>	<b>619.20</b>
United States and Canada	24.47	28.77	30.90	38.56	43.70	51.35
Spanish-speaking Latin America	56.11	50.97	72.46	73.22	93.73	110.13
Brazil	22.95	26.30	32.05	28.23	27.63	32.46
Spain	72.35	84.25	103.97	129.29	131.97	155.06
Europe (except Spain)	29.56	33.85	41.71	59.61	79.04	92.87
Africa	37.63	42.64	32.54	35.04	40.91	48.08
Middle East	27.88	47.69	48.15	54.06	47.29	55.57
Asia and the Pacific	59.42	48.30	41.34	47.30	62.71	73.68

	2021	2022	2023	2024	2025	2025 (USD)
Earnings before taxes	28.95	47.64	47.02	54.84	55.48	65.19
Earnings after taxes	19.56	35.71	35.21	41.47	41.46	48.72

PERSONAL	2021	2022	2023	2024	2025
Number of people (at December 31)	3,126	3,317	3,592	3,751	4,224
Number of people (yearly average)	2,974	3,222	3,456	3,672	3,988

	2021	2022	2023	2024	2025
% Earnings before taxes/revenue	10.8%	14.7%	13.4%	13.8%	13.2%
% Earnings after taxes/revenue	7.3%	11.0%	10.1%	10.5%	9.9%
Revenue per person (in € thousand)	89.75	100.91	101.30	107.94	105.50

Exchange rate December 31 2025: 1 EUR = 1.1750 USD

# Corporate information



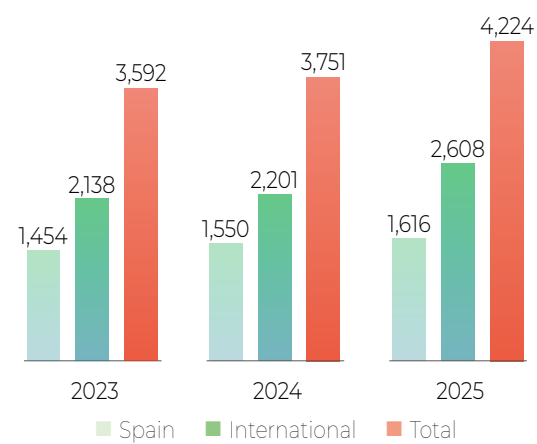
## 1. OUR PEOPLE

**OUR PEOPLE:** Our most important asset.

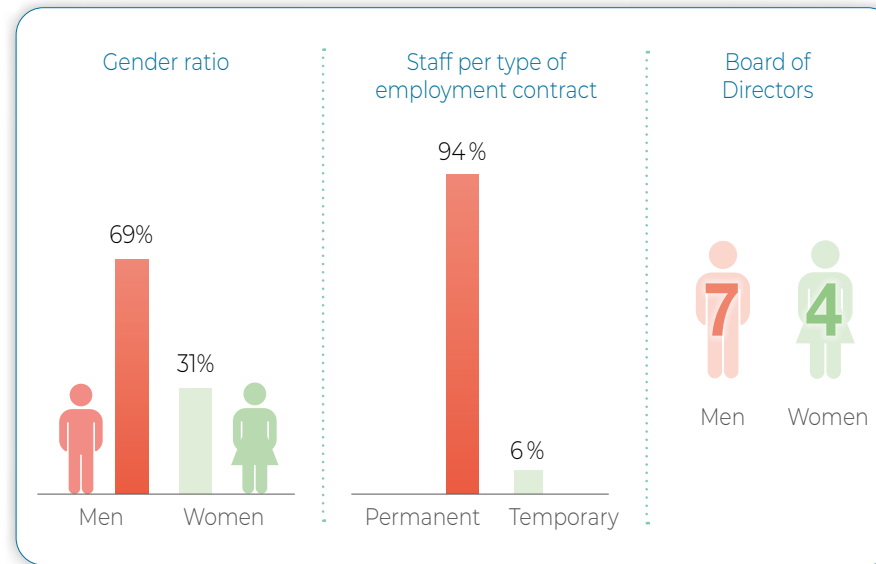
Our strategy is built on fostering the development of our people, as their growth is the foundation of the company's success.

### ANALYSIS AND INDICATORS

Number of people

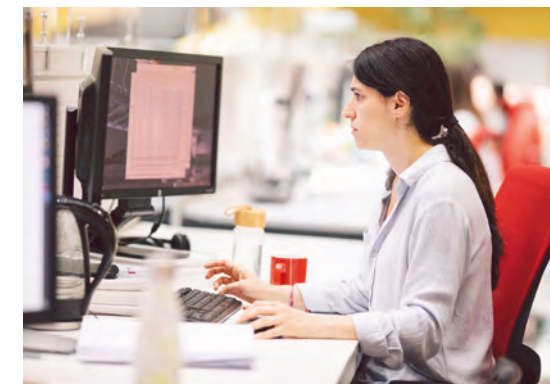


"The true value of the company lies in the people who make it possible"



**People by region**

Region	Number of people	Percentage
USA & Canada	237	6%
Spanish-speaking Latin America	1,047	25%
Brazil	463	11%
Spain	1,616	38%
Europe (except Spain)	294	7%
Africa	93	2%
Middle East	128	3%
Asia and the Pacific	346	8%
<b>TOTAL</b>	<b>4,224</b>	<b>100%</b>



### EMPLOYEE BENEFITS

#### FLEXIBLE AND PERSONALISED EMPLOYEE REMUNERATION PLAN

The TYPASA Group has a remuneration and benefits policy designed to ensure the talent attraction, retention and development.

The remuneration structure combines a fixed salary commensurate with the responsibilities of the role and the relevant market, with a variable component, reinforcing a culture of commitment, excellence and results-orientation.

In terms of employee benefits, the TYPASA Group maintains a flexible approach that allows compensation programmes to be adapted to the specific regulatory, tax and market conditions of each country in which it operates.

### LIFE AND PERMANENT DISABILITY INSURANCE

The TYP SA Group promotes various protection and welfare schemes for its employees, which may vary depending on the country and local market conditions.

This approach ensures a consistent and competitive benefits package globally, whilst adapting to the different regulatory and social environments in which the TYP SA Group operates.

### EMPLOYEE SERVICES

#### RELOCATION POLICY

- Providing competitive packages for expats:
  - In line with market practices in the sector.
  - In line with local costs of living.
  - In line with our international office conditions.
- We manage the paperwork (visas, flights, tax relief, etc.).
- Contributing to employees' professional development through an international career.

### OCCUPATIONAL HEALTH AND SAFETY MANAGEMENT SYSTEM



#### IN-HOUSE HEALTH AND SAFETY SERVICE

TYP SA, in Spain, has the technical expertise to manage occupational safety, ergonomics and applied psychosociology. Industrial hygiene and health monitoring are provided through an external prevention service.

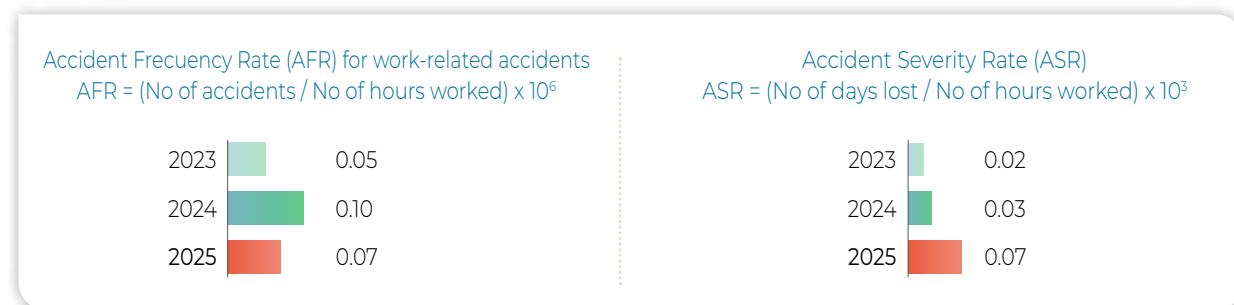
The various regional offices, branches, and subsidiaries of the Group located outside Spain are managed in accordance with the preventive measures established in their respective geographic locations.

#### SYSTEM IMPROVEMENTS

- Successful completion of the statutory audit of the occupational Health and Safety Management System, valid for the next two years.
- Extension of the scope of the ISO 45001:2018 certification to include the TYP SA Limited office in Ireland and the new offices of TYP SA PTY LTD in Australia.
- Completion and analysis of the psychosocial risk assessment at TYP SA Spain and implementation of the proposed measures.
- During this year, a general refurbishment has been carried out at the Madrid laboratory, primarily improving the forced extraction and ventilation systems, which represents a significant improvement in terms of exposure to chemical contaminants.

### ACCIDENT RATE STATISTICS

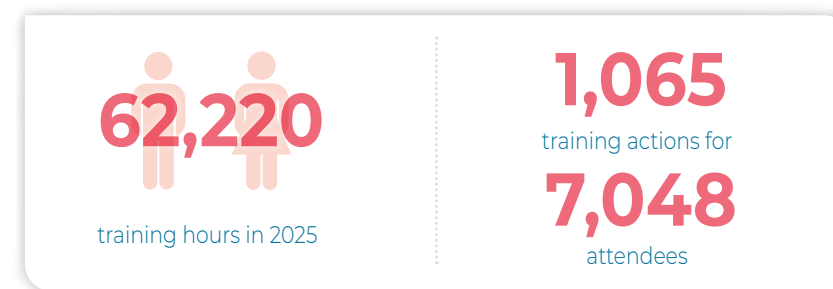
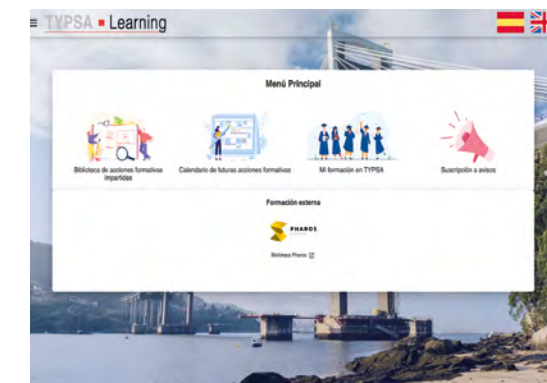
This data corresponds to the TYP SA Regional Offices and the companies of the TYP SA Group that are within the scope of the ISO 45001 certification.



### TRAINING

#### INTELLECTUAL STRENGTHENING OUR INTELLECTUAL CAPITAL

- One of the Group's firmest commitments to its people.
  - Essential for career progression and motivation.
  - Strategic training plan for the use of applied AI tools.
  - Annual and area-specific training plans.
  - Maintenance and improvements by global training providers.
  - Consolidating the TYP SA Learning platform to promote internal training and knowledge sharing amongst employees.
- New features such as the issuance of attendance and achievement certificates linked to exams.



Committed to the ongoing training of our professionals

#### TRAINING PRIORITY IN:

##### Digitalisation and implementation of new technologies:

- Data Governance and Artificial Intelligence (AI) applied to engineering and architecture processes.
- Digital twins. Augmented virtual reality.
- Advanced BIM processes and tools. Collaboration platforms.
- Emerging technologies for software development and cybersecurity.

##### Advanced algorithms in consulting, architecture and engineering:

- Constitutive models and geotechnical engineering.
- Tunnel design and underground works.
- Flood risk analysis and management, and dam safety.
- Fire safety.
- Coastal and port engineering.
- Technology for sustainable building and seismic engineering.
- Offshore wind engineering.
- Optimisation of PV power stations and electricity networks.
- Transport and mobility planning.
- Strategic infrastructure consulting.

##### Sustainability of buildings, infrastructures and cities:

- Decarbonisation and BIM-6D methodologies.
- Climate change adaptation.
- Circular economy.
- Energy efficiency.
- Nature-based solutions.
- Cost-benefit analysis, including social, environmental and economic factors.
- Operation and maintenance.



## 2. THE FIGHT AGAINST CORRUPTION

Our INTEGRITY MANAGEMENT SYSTEM (IMS), enables us to pursue and consolidate an ethical corporate culture, prioritising regulatory compliance, transparency and integrity.

### COMMITMENT TO ETHICS AND INTEGRITY

Supported by our:

- Code of ethics containing mandatory guiding principles for everyone in the Group.
- Corporate integrity policy and gift policy.
- Internal information system policy.
- Integrity management manual.
- Annual modern slavery statement and equality, diversity and inclusion statement.
- Financial and non-financial control procedures.
- ISO 37001 anti-bribery certification.
- Compliance Committee, working independently and reporting directly to the Board of Directors.

" We reinforce our commitment to the highest standards of integrity and transparency "

### SYSTEM IMPROVEMENTS

- Definition and implementation of a new risk assessment methodology.
- New multi-site ISO 37001 certification incorporating TYP SA's branch and laboratory in Peru.
- The subsidiary Teknés formally adopts the key documents of our Integrity Management System.
- TYP SA's agency in Chile renews its ISO 37001 certification following the entry into force of new, more restrictive legislation.
- TYP SA's branch in Paraguay obtains the national standard integrity seal, which recognises good integrity practices in corporate management.

## 3. SOCIETY

### CLIENTS

SERVICE EXCELLENCE FOR CLIENTS: We aim to be a trusted partner.

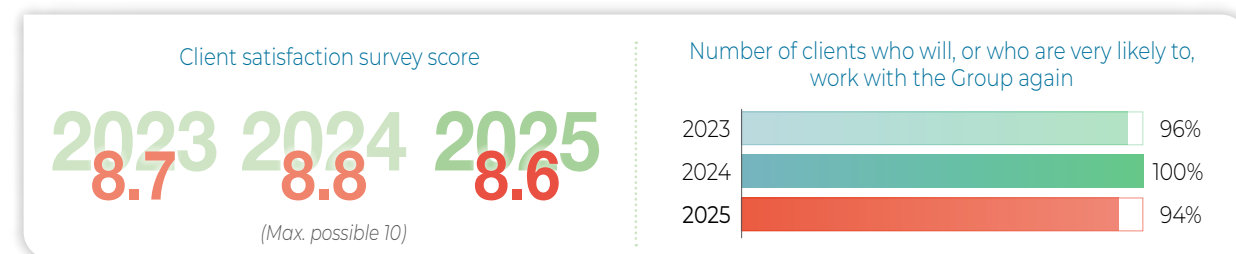
### COMMITMENT TO SERVICE EXCELLENCE

- We identify client requirements and needs.
- Our service goes beyond initial expectations.

### IMPROVEMENT TOOLS

- Client satisfaction surveys.
- Interactive client communication channels to keep track of projects.

### CLIENT MANAGEMENT



### Clients who rated the Group's work as good or very good



### Number of incidents dealt with and resolved



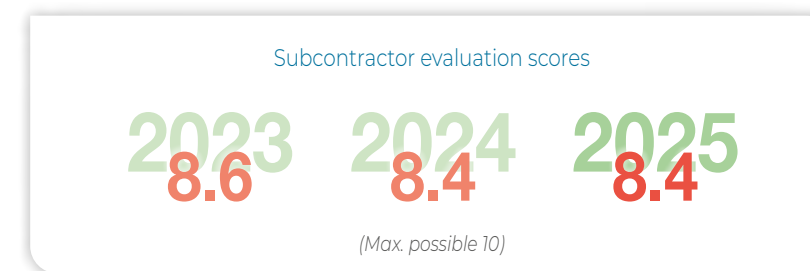
### SUPPLIERS

SUPPLIER APPROVAL: We guarantee that collaborators and subcontractors work to our standards.

### SYSTEMS AND PROCEDURES

An interactive database, fed with dynamic questionnaires containing all the available records on both suppliers and subcontractors, is the main control and selection tool for choosing the right supplier.

### EVOLUTION SUBCONTRACTORS SCORE



### TYP SA'S MANAGEMENT SYSTEM

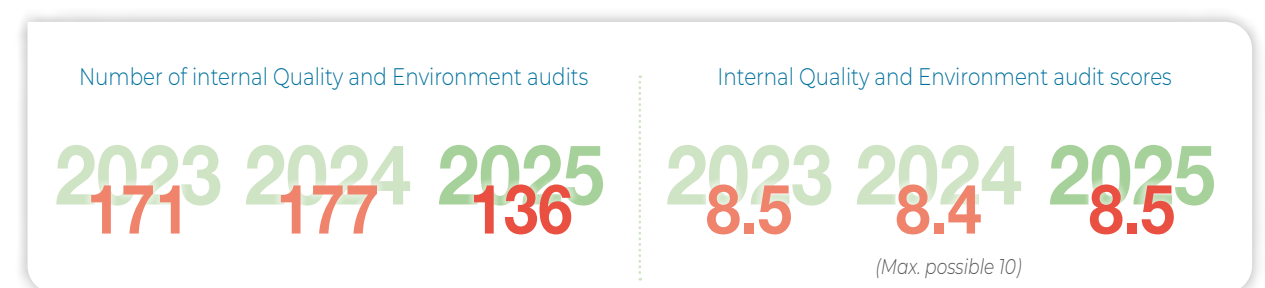
We operate AS ONE COMPANY from anywhere in the world.

TYP SA's ISO 9001 certified quality system has been in place for 30 years and is a common reference for all branches and subsidiaries.

Our ISO 14001 certified Management System has assured correct environmental performance for over 25 years.

### SYSTEM IMPROVEMENTS

- Carbon footprint certified and AENOR Verification Statement obtained for the greenhouse gas emission inventory corresponding to 2023.



## THE COMMUNITY

**COMMITMENT TO SOCIETY:** Acting responsibly and playing our part in improving society wherever we are.

### TYP SA FOUNDATION FOR DEVELOPMENT

Since its creation, the Foundation has been promoting education and development in communities in the most disadvantaged countries, and is currently committed to the following projects:



Visit by the Spanish Ambassador of the Democratic Republic of the Congo to UNILAC

- **The UNILAC Project in the Democratic Republic of the Congo.** This is the Foundation's flagship project, on which it has focused a large part of its funding since 2008, for the construction of a university in Mahagi (UNILAC) and, in particular, for the specific development of the faculties of civil engineering and agronomy, through student grants, doctoral scholarships and bonuses for lecturers. This initiative is carried out in collaboration with the Catholic Diocese of Mahagi-Nioka and the religious order Missionaries of Africa (White Fathers), to whom funds are transferred for the implementation of academic programmes and works to improve their infrastructure, facilities and equipment.

In the 2025–2026 academic year, UNILAC has consolidated its student numbers at 487. The interest shown and the two visits by the Spanish Ambassador in the country have contributed to raising the institution's profile and highlighting its importance for the entire region.

On the academic front, the Foundation continues to benefit from the significant collaboration of the Polytechnic University of Madrid ("UPM"), with one of its main pillars being the Erasmus+ mobility programme, through which two UNILAC students undertake placements in Madrid to study subjects at the UPM.



"Mobile Water School" project

- **"Soyapango School of Engineering" project, in El Salvador.** The success of the UNILAC project has led the TYP SA Foundation to attempt to replicate this model in other developing countries. In 2025, a collaboration was initiated with the Padre Arrupe Foundation to study the feasibility of establishing a civil engineering school in Soyapango, with the aim of launching it as from 2026, with the support of the Polytechnic University of Madrid.

In 2025, the Foundation also carried out other initiatives, notably the following:

- **The "Mobile Water School" project in Zambia.** This involves training local technicians in the construction of simple drinking water supply and sanitation facilities in the towns of Mumbwa and Kaoma, so that they can set up their own micro-enterprises, earn a decent living by carrying out this work for the communities, and thereby improve the quality of life of the local population. It is promoted and implemented by the organisation TADEH, based in Spain.



"Sponsor a Vegetable Garden" project

- **"Sponsor a Vegetable Garden" project, in Senegal.** Its aim is to provide water infrastructure to the communities of Allinguel and Ndilicongo so that, in an organised manner, they can improve the production of horticultural products for self-consumption and local sale, thereby improving food security and quality of life. It is promoted and implemented by the organisation Yakaar Africa, based in Senegal and Spain.

- **"Safe Schools for Africa" project, in Madagascar.** This is a pilot project, carried out in collaboration with AMEND, an international organisation specialising in road safety for vulnerable groups in developing countries, and promoted by the European Investment Bank, to improve the safety of schoolchildren through the study and implementation of road safety measures in the vicinity of schools and colleges located in population centres crossed by national roads. The Foundation provides technical assistance to the investment management team and will monitor the implementation of the project on the ground.



## OUR PRESENCE IN THE INDUSTRY

### Involvement in business and professional organisations

Leadership in positioning the sector for the opportunities presented by regulatory modifications in climate change and sustainable energy, international mobility, digital transformation, sustainable cities, international cooperation, and development financing.

- Important representation in the main Spanish, European, and international industry organisations: FIDIC, EFCA (Presidency), TECNIBERIA, MAFEX, and AEDIP (Vicepresidency).
- We are active in Spain's Professional Associations and professional institutions (Camino's Foundation; Spanish Institution of Civil Engineers, Agustín de Betancourt Foundation and the Institute of Engineering of Spain).
- Presence in the main discipline-related technical organisations: the Mediterranean Water Institute, the Spanish Association of Tunnels and Underground Works (AETOS), the World Road Association (PIARC), the International Federation for Structural Concrete (FIB), and the Water Environment Federation (WEF).



Inés Ferguson at the FIDIC annual conference, in Cape Town

## WORKING WITH UNIVERSITIES

### Collaboration agreements for the integration of interns

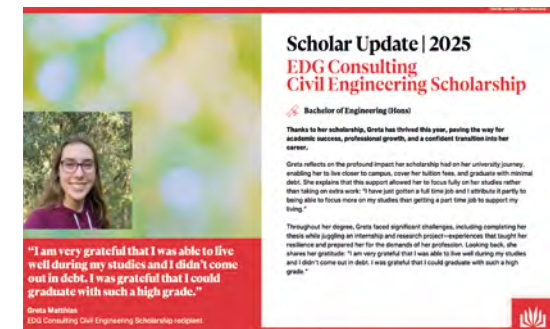
Agreements continue to run with the main public and private universities in Spain, as well as with business schools and other educational institutions. Worthy of mention are: the Polytechnic University of Madrid (UPM), Polytechnic University of Valencia (UPV), Rey Juan Carlos University, European University, University of Valladolid, Francisco de Vitoria University, CEU San Pablo University, EAE Business School, Vocational Training Programmes of the Community of Madrid, EDEM Business School, University of the Basque Country, and University of Cantabria, University of A Coruña (UDC), University of Zaragoza, San Jorge University in Zaragoza, Higher Polytechnic School of the University of Burgos, Higher Technical School of Engineering of the University of Seville, University of Murcia (UMU), Polytechnic University of Cartagena (UPCT) and San Antonio Catholic University of Murcia (UCAM).

We also collaborate with universities and government clients in various international regional offices. Among the most notable are: University of Leeds and Nottingham Trent University, in the United Kingdom; KTH University in Stockholm, Sweden; Università degli Studi di Trento, in Italy; Faculty of Science and Technology (FCT) of the New University of Lisbon and Lisbon Higher Institute of Engineering (ISEL), in Portugal; Prince Sultan University, in Riyadh, Saudi Arabia; University of Engineering and Technology (UETC), and the Peruvian University of Applied Sciences (UPC), in Peru; Autonomous Metropolitan University in Iztapalapa and Azcapotzalco, Mexico; Arizona State University Phoenix, and Griffith University in Queensland, Australia.

- A total of 133 interns participated during the year -

### Technical collaborations

- Collaboration with a large majority of universities which offer technical degrees in Spain, as well as with universities in the United States, Saudi Arabia, the United Kingdom, and Sweden.
- Member of the Advisory Board of the School of Civil Engineering (Escuela Técnica Superior de Ingeniería de Caminos, Canales y Puertos) at the Polytechnic University of Valencia.
- Agreement with the Polytechnic University of Valencia to participate in the process of analysing and evaluating various official Master's degrees offered by the Higher Technical School of Industrial Engineering (Master's Degree in Energy Technology for Sustainable Development, Master's Degree in Production, Logistics and Supply Chain, and Master's Degree in Industrial Construction and Installations).



Students at Griffith University, in Australia, in collaboration with the subsidiary EDG Consulting

- Framework collaboration agreement with the Higher Technical School of Civil Engineering at the Polytechnic University of Valencia to provide support, during the 2025–2026 academic year, for dual training leading to the official Master’s degree through a work-study contract.
- Collaboration with the European University of Valencia to deliver classes on the Master’s in Organisational Engineering, Project Management and Business.
- Collaboration through an Industry PhD programme with the Polytechnic University of Catalonia for research on new technologies in tunnel engineering.
- Collaboration with the Polytechnic University of Catalonia in delivering the AETOS Master’s Degree in Tunnels and Underground Works and the Master’s Degree in Geotechnical Engineering.
- Collaboration agreement signed by the subsidiary Intemac with Nebrija University to deliver courses for the Civil Engineering undergraduate degree and the Master’s in Civil Engineering.
- Collaboration with the Higher Technical School of Engineering at the University of Seville in delivering the Master’s Degree in Tunnels and Underground Works, specifically for the module on tunnels and deep excavations.



Madrid School of Civil Engineering Harbour Laboratory

- Framework Agreement with the University of Cantabria to provide support during the 2025–2026 academic year for the dual-track training programme leading to the official Master’s degree in Civil Engineering.
- Continuation of the agreement with the Madrid School of Civil Engineering Harbour Laboratory, marking 18 years of teaching and innovation support through the TYP SA – Pablo Bueno Harbour Research Unit.
- Collaboration with the Madrid School of Architecture to deliver the MEDIP master’s degree (Comprehensive Project Management).
- Collaboration with UNED distance learning university to organise and teach the AETOS Master’s Degree in Tunnels and Underground Works.
- Our subsidiary Green Blue Management collaborates with the Universities of Cantabria, A Coruña, the Universidad Politécnica de Valencia, and the Universidad Politécnica de Madrid, supporting innovation plans focused on

monitoring and evaluating Sustainable Urban Drainage Systems, developed through pilot projects. It also collaborates with the University of Alicante to enhance the Master’s in Architecture with knowledge of these SUDS.

- The Swedish branch, TYP SA AB, collaborates with Stockholm’s Royal Institute of Technology (KTH), giving classes on bridge design and tunnel engineering.



Christian González, Oihan de Andrés and Manuel Martínez, top three students receiving Intemac awards

#### AWARDS GRANTED BY THE GROUP

- Our subsidiary Intemac awarded the top three students from the School of Civil Engineering at the Universidad de Cantabria, who had the best academic records in Structural Engineering.
- TYP SA awarded the top students at the School of Civil Engineering, Universidad Politécnica de Madrid, who had the best academic records in Civil Constructions, Transport and Urban Services, and Hydrology.
- TYP SA Foundation for Development awarded the best Master’s thesis from the School of Civil Engineering, Universidad Politécnica de Madrid, in the area of Development Cooperation.

#### AWARDS AND RECOGNITIONS GIVEN TO THE GROUP

- XVII Edition of the Caminos Madrid Awards organised by the Association of Civil Engineers. Outstanding Engineer Award 2024. Awarded in 2025.

Pablo Bueno Tomás, President and CEO of the TYP SA Group.

The Madrid Division of the Institute of Civil Engineers has awarded as Outstanding Engineer 2024 Pablo Bueno Tomás, president of TYP SA, in recognition of his professional career and his contribution to the development and recognition of Spanish engineering. Pablo has served as president of FIDIC, vice president of EFCA, president of Tecniberia, president of Fidex, and member of the Governing Board of the Institute of Civil Engineers, among other roles. In addition, he has played a key role in the international growth of TYP SA, where he has been president since 2014.



Pablo Bueno, 2024 Outstanding Engineer Award

- FIDIC Award 2025 and IABSE Award 2025.

Pamban Vertical Lift Railway Bridge, India.

The International Federation of Consulting Engineers (FIDIC), at its conference held in Cape Town, awarded the Vertical Lift Pamban Railway Bridge in India, with the distinction Project of the Year in the Small to Medium-sized Project category.



Pamban vertical lift railway bridge, India

IABSE Project and Technology Awards 2025. The bridge has also been recognised as a finalist by the International Association for Bridge and Structural Engineering (IABSE) in the Small Road and Railway Bridges category.

TYP SA, together with its subsidiary MC2, share in the award for their contribution to the detailed design and construction engineering services for the structural, mechanisms and electromechanical components of the bridge.

- V ACHE Structural Engineering Awards. Building Category. XVII Edition of the Caminos Madrid Awards, Institute of Civil Engineers. Best Public Works Project.

Renovation of the Santiago Bernabéu Stadium.

Awards granted for the renovation of the Santiago Bernabéu Stadium in Madrid. The TYP SA Group is a recipient of this award, alongside developers, designers and builders, for the architectural detailed design, integrating the various engineering designs, leading the coordination of the partial projects of MEP installations, structures and technology, in addition to the structural calculations carried out by the subsidiary MC2. The design of the hypogeum ventilation system, heating the spectator stands, and gas installation, were also carried out, as well as advanced combined studies of pedestrian and smoke simulation and CFD comfort models.



Awards ceremony of the Institute of Civil Engineers

- 5th ACHE Structural Engineering Awards.

Viaduct over the Barranco de la Bota.

Awarded with an Honorable Mention prize in the category of Greatest Innovation in Structures at the V ACHE Structural Engineering Awards. TYP SA, together with MC2 and INTEMAC, shares in this award for their work on the revised and supplementary project designs, construction management technical support and advisory services, wind stability analysis of the arch during both construction and in operation.



Viaduct over the Barranco de la Bota

- Award from the Tunnelling Association of Canada (TAC).

Toronto Metro Eglinton Crosstown West Extension (ECWE).

Recognised by the Tunnelling Association of Canada (TAC) as the Best Project of the Year 2025. This recognition follows the achievement of the Substantial



León-Asturias high-speed rail line, Pajares bypass

Completion milestone in June 2025. TYP SA shares this award with its partners, contractors and the end client, all recognised for their technical excellence and in-depth knowledge of the specific challenges involved in the development of underground infrastructure in Canada.

• **XI Edition of the Segovia Aqueduct Award for Public Works and the Environment**  
León-Asturias High-Speed Rail Line, Pajares Bypass.

Awarded by the Foundation of Civil Engineers. TYP SA is a recipient of this award in recognition of its role in the construction supervision of the tunnel adaptation works for access, evacuation, and safety and protection systems.

• **Ground Engineering Awards 2025 UK. Sustainability Category**  
The Copthall Tunnel on the HS2 High-Speed Rail Line.

TYP SA and its partners have been recognised for their innovative approach in redefining the project's initial design, prioritising sustainability and generating significant social, environmental and economic benefits. Key actions include replacing an open-cut excavation with a landscaped cut-and-cover tunnel, as well as the early integration of ecological, landscape and environmental criteria into the design.

• **Advanced Architecture Awards 2025**

Technological Development and Experimentation Centre (CETEDEX).

Nominated as a finalist in the Sustainability and Decarbonisation category of the Advanced Architecture Awards at the Rebuild 2025 Forum. TYP SA is part of this achievement through its contributions in architectural, preliminary and detailed design, and on-site support services, as well as the urbanisation and landscaping. The result is a campus integrated into the landscape, featuring unique and functional architecture that clearly embodies the excellence in research and cutting-edge technology championed by INTA.

• **Albert Vilalta Award for Best Infrastructure 2024**

Diagonal Avenue Tramway, on the section between Glòries and Verdaguer.

Award presented by the Infrastructure Advisory Council of Catalonia (CADIC) at the 9th edition of the Nit de les Infraestructures (Infrastructure Night). TYP SA is recognised for its work on the Preliminary Planning Study for the connection of the Trambaix and Trambesòs tram networks, as well as the detailed design for the urban development and transportation for the first phase of the route. The infrastructure, inaugurated in 2024, is a strategic development for mobility, with a 2 km connection that facilitates the daily commute of approximately 24,000 passengers, and contributes to a reduction of 2,000 vehicles on the central section of Avenida Diagonal.

• **TAC Awards - The Architecture Community**

Palma Seafront Promenade Remodelling project.

The Architecture Community (TAC) has awarded the "World Design Awards 2025" in the Landscaping category to the Palma Seafront Promenade Remodelling project, promoted by the Port Authority of the Balearic Islands. TYP SA receives this award for its participation on the team for the detailed design and construction supervision of the urban redevelopment.



CETEDEX Technology Centre



Diagonal Avenue Tramway, Barcelona



Palma Seafront Promenade, Mallorca

**FORUM PARTICIPATION**

This year we have taken part in various conferences, forums and technical seminars. These events, held in different countries, provide us with an excellent opportunity to exchange knowledge, present our latest innovations and strengthen ties with clients and strategic partners globally.

- ❖ Seminar on Digital Twins for Infrastructure and Cities. Madrid, January 25.
- ❖ Living Summit – Coword. Madrid, February 25.
- ❖ Conference on Sustainable and Resilient Roads. Segovia, February 25.
- ❖ MIPIM. Cannes, March 25.
- ❖ Passenger Terminal Expo. Madrid, April 25.
- ❖ Wind Europe Annual Event. Copenhagen, April 25.
- ❖ World Tunnel Congress. Stockholm, May 25.
- ❖ Intersolar Europe Congress. Munich, May 25.
- ❖ International Symposium on Conceptual Design of Structures. Rio de Janeiro, May 25.
- ❖ 4th Financing for Development Conference. Seville, June 25.
- ❖ Africa Energy Forum. Cape Town, June 25.
- ❖ UITP Summit. Hamburg, July 25.
- ❖ 5<sup>th</sup> Session of the Royal Spanish Academy of Civil Engineering for the Bridge Design course, focusing on sustainability. Madrid, July 25.
- ❖ Conference: "DIGITAL TWIN, Applications and Future Opportunities". Madrid, July 25.



Airports team at "Passenger Terminal Expo"



TYP SA stand at "Rail Live 2025"



José Cordovilla at the conference "AI in the Design and Management of Infrastructures: Reality and Fiction"

- ❖ FIDIC Annual Conference 2025. Cape Town, South Africa, September 25.
- ❖ Global Rail 2025. Abu Dhabi, September 25.
- ❖ Watford Conference on Railways. London, September 25.
- ❖ Annual Meeting of the African Road Maintenance Funds Association (AFERA). Nairobi, September 25.
- ❖ 26<sup>th</sup> Project Management Forum. Madrid, September 25.
- ❖ Canada Infrastructure Conference. Toronto, October 25.
- ❖ VIII Water Engineering Conference. Zaragoza, October 25.
- ❖ 2<sup>nd</sup> Technical Conference on Public-Private Participation as a Global Management Model of Road Networks. Zaragoza, November 25.
- ❖ Conference: "Artificial Intelligence in the Design and Management of Infrastructures: Reality and Fiction". November 25.
- ❖ Conference "Water and the Future: Roadmap for Spain". Madrid, November 25.
- ❖ 2<sup>nd</sup> SWPC Water Forum. Riyadh, November 25.
- ❖ Global Airports Forum 2025. Riyadh, December 25.
- ❖ Rail Live 2025. Madrid, December 25.
- ❖ ICE-CICCP Bilateral Summit. London, December 25.

## 4. ENVIRONMENT

**ENVIRONMENTAL MANAGEMENT SYSTEM:** Committed to minimising environmental impacts generated by civil works, directly or indirectly through third parties.

### LINES OF ACTION

- Priority given to all environmental aspects in our work.
- Responsible use of resources.
- Proper waste management.
- Staff and suppliers required to observe correct environmental practices.

### EMISSIONS CONTROL

TYP SA has two main strategies to fight climate change:

- From a corporate point of view, calculating and verifying the corporate carbon footprint since 2013, also registered on the National Carbon Footprint Registry of the Ministry for the Ecological Transition, obtaining, not only recognition for the calculation, but also for having achieved a reduction over the years.
- In parallel, a project strategy developed by the Division of Sustainability and Environmental Assessment, integrating the climate change variables in all project phases, with the aim of achieving both mitigation of GHG emissions and incorporating climate change adaptation measures, with the sole objective of developing resilient infrastructures.

The carbon footprints for the years 2022 and 2023 have been submitted to the Registry of the Ministry for the Ecological Transition and Demographic Challenge.

Evolution of the Carbon Footprint in Spain in the last four years (tCO<sub>2</sub>eq):



\* - Footprint pending certification

" We updated our carbon footprint and obtained certification under the new version of the ISO 14064 standard "

### WASTE

Selective collection of hazardous and non-hazardous waste is a priority at all our offices, to ensure all waste is treated appropriately.

Authorised managers deal with hazardous waste safely, while authorised recycling managers take charge of non-hazardous waste, such as paper.

Alongside waste management, waste reduction policies are applied such as equipment reuse.

### RESOURCE CONSUMPTION

TYP SA continues to closely monitor consumption and improve its systems, thus preventing a greater impact on the depletion of natural resources, in addition to obtaining savings.

Progress of electric, power, paper and water consumption:

ELECTRIC POWER consumption (kWh) progress						
	2020	2021	2022	2023	2024	2025
Spain	1,608,320	1,737,884	1,845,976	1,775,082	1,649,233	1,432,329
Peru	216,700	254,783	334,994	453,217	414,843	384,868
UAE	38,606	37,438	17,169	19,852	18,384	15,379
Saudi Arabia	-	-	49,688	33,956	58,241	82,394
Mexico	-	-	121,336	147,011	228,337	270,887
Sweden	-	-	-	4,893	7,404	7,911
Australia	-	-	-	-	-	2,210

The Guarantee of Origin Certificate issued by the Spanish National Commission on Markets and Competition (CNMC), confirms that the electricity supplied to the Group's offices in Spain comes from renewable energy sources.

The origin of the electricity used by Group companies INTEMAC, MC2 and RAUROS is also certified as renewable.

PAPER consumption (kg)						
	2020	2021	2022	2023	2024	2025
Spain	9,791	8,801	9,785	12,813	3,991	4,697
Peru	2,528	2,678	2,789	1,563	1,364	1,216
UAE	162	137	-	65	35	25
Saudi Arabia	-	-	32	30	34	29
Mexico	1,805	2,684	1,769	2,124	1,577	1,861
Sweden	-	-	7	7	7	5
UK	-	-	5	13	28	49
Australia	-	-	9	23	6	2

WATER consumption (m <sup>3</sup> )						
	2020	2021	2022	2023	2024	2025
Spain	2,826	3,181	3,396	4,169	3,864	2,474
Peru	1,633	2,437	3,107	3,778	3,131	3,164
UAE	119	43	-	-	-	-
Saudi Arabia	-	-	1,294	-	-	-
Mexico	-	-	-	-	-	717



## 5. INNOVATION

### STRATEGIC COMMITMENT TO INNOVATION, DIGITALISATION, AND DIGITAL SERVICES

Throughout 2025, TYP SA has strengthened its commitment to applied innovation and digitalisation, positioning artificial intelligence (AI) as a priority area for internal transformation and a key driver for optimising productivity, technical quality and knowledge management. This focus has taken shape in a programme of initiatives, led by the AI Plan 2025, which represents the main line of investment in digital innovation for the financial year and marks a turning point in the corporate adoption of these capabilities.

The strategy is implemented through TYP SA Digital Solutions (TDS) and, as a direct result of the plan, numerous training sessions and short training modules have been held throughout 2025, designed to democratise technical knowledge and ensure widespread adoption across all levels of the Group

Building on this training foundation, various high-impact platforms and agents have emerged, reflecting the transition from conceptual testing to operational solutions:

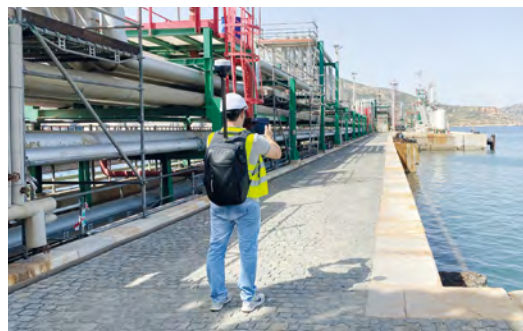


- **Alexandria:** established as the corporate platform and unified environment for the deployment of specialised agents.
- **Proteo:** specialising in the intelligent and governed management of project references and knowledge.
- **Aragorn:** focused on automated risk analysis and the interpretation of contractual clauses.
- **ChatGPT TYP SA (corporate document interpretation agent):** a key tool for transforming technical and historical documentation into accessible, reusable and traceable knowledge within a secure corporate environment.

In parallel with the deployment of AI, the Group's digital innovation has maintained steady progress in areas critical to operational efficiency. We have continued to enhance process automation and the development of applications, both corporate and for clients, notably:

#### Internal Service Applications

- **TYP SA Deal:** a market intelligence platform that centralises national and international public procurement data.
- **WISe:** a specialised solution for collecting data on structural defects in the field.
- **Atenea:** automatic quality audit for Revit (BIM) models.



Port of Cartagena

#### Solutions for Clients and Projects

- **TMDA (Annual Average Daily Traffic):** a computational tool adapted to the Chilean context for the calculation and analysis of traffic flows, ensuring traceable results for transport studies.
- **BIM-GIS Digital Twin (Port of Cartagena):** advanced integration of 2D/3D models with operational databases within a single collaborative environment for the management of port infrastructure.
- **MaIA:** European Institute of Innovation (IEI) application for the structured collection of technical data in energy efficiency audits, preparing the information for subsequent analysis using artificial intelligence techniques.

#### INNOVATION PILLARS IN PROJECTS

TYP SA has a long-standing track record in the development of research, development, and innovation projects applied to our core activities, coordinated by the R&D+i Management Committee. Our management system encourages us to innovate today to enhance the efficiency, sustainability, and quality of our projects for a better tomorrow. This activity is reflected in the following indicators:

47

self-financed ongoing innovation projects

38

completed projects

22

new projects approved

7

innovation awarded projects

2

million euros invested (2025)

With three strategic pillars we bring value in our consulting, engineering and architectural services:

### 1. Advanced computing technologies in building and infrastructure projects

We generate unique and highly relevant knowledge to face the most ambitious global challenges. The following developments stand out:

- **PARACUS:** parameterisation of recurrent structures. Application to the design and structural calculation of acoustic barriers and skewed frames.
- **HYDROCFD:** 3D hydraulic modelling using CFD.
- **TÚNEL-LA-AVANZADA:** application of BIM methodology to the remodelling of La Avanzada tunnel in Bizkaia. Advanced digitalisation in a complex work.
- **CIRSOS:** foundations of sustainable wind turbines.

### 2. Digital solutions for improving technical capabilities

We develop useful tools for our business, which allow our teams to work more efficiently:

- **TYP SA-DEAL:** advanced tool for market analysis and the identification of opportunities in public tenders using web-scraping and artificial intelligence.
- **TMDA-CHILE:** development of a computational tool and web viewer to identify the Annual Average Daily Transit (TMDA) of vehicles in Chile.

### 3. Induced innovation

We also innovate to provide imaginative, cutting-edge technological solutions that meet the needs of our clients. Some examples of this innovation to address specific project challenges are:

- **TYP SARL242:** technological advances in the design of high-speed rail infrastructure.
  - ❖ **Geotechnical modelling and advanced BIM:** implementation of automated 2D/3D numerical models using Python (Plaxis) and integration of geotechnical ground models into dynamic and collaborative BIM environments (Leapfrog).
  - ❖ **Underground construction engineering:** technical solution for complex on-site operations, notably the extraction of the tunnel boring machine (TBM) from an intermediate shaft without the prior installation of the secondary lining.
  - ❖ **High-speed safety and regulations:** adaptation to the European Common Safety Method (CSM) for risk assessment and compliance with specific operation and maintenance requirements outside general standards.
- **TYP SAOFF24:** advanced designs for the deployment of offshore renewable energy.
  - ❖ **Advanced offshore geotechnics:** implementation of 3D geotechnical models to characterise the high variability of the seabed.
  - ❖ **Hydrodynamic challenges:** comprehensive verification of wave-induced breaking loads in shallow water, complementing current regulations with specific laboratory tests.
- **SURFPARK24:** advanced designs for leisure wave pools
  - ❖ **Comprehensive waterproofing and drainage system:** design of an advanced multi-layer system (liner, geodrains and foams) that optimises user safety against impacts and the performance of the installation.
  - ❖ **Adaptive geotechnics and structural control:** implementation of bespoke ground improvement solutions and design of robust foundations in complex soils and seismic zones.
  - ❖ **Digital design of complex surfaces:** development of interoperable automation tools (Revit, Civil 3D, CAD) for modelling and controlling bathymetry with millimetre-level tolerances.
- **PVGRAd2425:** research and development of a device to optimise costs and energy in photovoltaic plants.
  - ❖ **Climate artificial intelligence:** implementation of fuzzy logic algorithms to downscale Global Climate Models (GCMs), essential for the resilient design of infrastructure.
  - ❖ **Structural analysis software (PVPile):** development of a finite element tool for cost optimisation in deep foundations.

## 6. CONTRIBUTION TO THE SDGs

TYP SA maintains a firm and verifiable commitment to the Sustainable Development Goals (SDGs), integrating them across the board both in the delivery of our services through projects and in corporate policies and practices. This approach enables the SDGs to be transformed into real operational criteria: from the planning and design of more efficient and resilient infrastructure and buildings, to the incorporation of climate change mitigation and adaptation measures, the protection of biodiversity, the circular economy, and the improvement of environmental and social performance throughout the life cycle of assets.

The company channels its contribution to the 2030 Agenda through its strategic business areas, developing projects that address global challenges such as the efficient use of water and resources, energy, urban resilience and climate action, with a results-oriented technical approach supported by digitalisation and innovation.

In the field of **water and sanitation**, the company has strengthened its commitment to digitalisation to support public authorities in improving the efficiency of infrastructure management and life-cycle analysis, promoting the use of BIM and GIS, and enhancing hydraulic modelling capabilities with specialised tools. This development

is complemented by the introduction of **supercomputing equipment**, which enables the handling of large volumes of data and the production of more accurate simulations and calculations in less time, optimising resources and enhancing the quality of decision-making in water infrastructure.

In the **energy sector**, TYP SA continues to make a significant contribution to the deployment of renewables and the development of solutions that accelerate their implementation. Improvements in technological tools to optimise the design of photovoltaic plants and the integration of advanced climate data strengthen the projects' ability to anticipate challenges and their overall robustness. Furthermore, innovation extends to emerging technologies, such as solutions linked to marine energy and the enhancement of **battery storage** capabilities, which are key to grid stability and the sustainability of the energy mix.

In **cities and infrastructure**, this contribution is reflected both in planning and in the capacity to respond to and learn from extreme events. Since the devastating flooding (DANA) that struck Valencia in 2024, measures and capabilities in emergency management and climate disaster prevention have been strengthened, incorporating operational protocols, social support initiatives and collaboration with public bodies on critical infrastructure. In addition, the development of collaborative digital solutions based on crowdsourcing and crowdreporting —such as GEOdana— has been promoted to accelerate emergency response and foster more resilient communities. At the same time, TYP SA continues to contribute to the deployment of **Sustainable Urban Drainage Systems (SUDS)** and the improvement of GIS tools to select optimal sites and expand knowledge of their performance in dense urban environments vulnerable to flooding and other extreme weather events.

Furthermore, our contribution to the SDGs is carried out through a transversal approach to sustainability, which organises and reinforces this impact across all projects. To ensure consistency, traceability and continuous improvement, and to translate sectoral progress into comparable and scalable results, TYP SA structures its contribution across six areas of action that guide both our technical commitment and our corporate roadmap:

### CLIMATE ACTION

TYP SA incorporates **climate change mitigation and adaptation** into its planning and design solutions for infrastructure, energy and cities, whilst also strengthening the transversal integration of sustainability criteria across disciplines. This progress is achieved through working groups, technical participation in specialist forums, innovation projects to incorporate tools, and the implementation of procedures from the earliest stages.

Proof of this is **HEDIVA**, a digital and interactive tool led by TYP SA's Sustainability and Environmental Assessment Division, in collaboration with our digital subsidiary TDS, under the European Investment Bank's contract for

'**Technical assistance for the simplification of climate-proofing requirements in ERDF programmes**'. HEDIVA enables vulnerability analyses to be carried out at municipal level across the whole country and, as a result, provides a guide to recommended adaptation measures based on the type of infrastructure and the assessed climate hazard, facilitating access to climate finance for small-scale developers and promoting the integration of adaptation measures into projects.

### PROTECTION OF NATURAL CAPITAL

TYP SA integrates resource and biodiversity conservation as a technical criterion from the early stages of planning and design, with the aim of **avoiding and minimising impacts**, strengthening the **environmental compatibility** of projects and improving their performance throughout their life cycle. This approach is implemented through the incorporation of nature-based solutions, the integration of green infrastructure, and the development of prevention, restoration and compensation measures where appropriate, supported by specific analyses and compliance with applicable regulatory frameworks and standards. Likewise, priority is given to the **efficient use of materials and resources**, the reduction of pressures on the land, and the improvement of ecosystem resilience, contributing to projects that are more sustainable, socially acceptable and robust in the face of environmental and climate risks.

This commitment is reinforced through **corporate environmental management**, by implementing and continuously improving internal procedures aimed at **reducing the environmental footprint of operations** (consumption, waste and emissions), promoting more responsible procurement and practices, and fostering a shared environmental culture throughout the organisation through training, monitoring of indicators and best practices.

### INNOVATION AND DIGITALISATION

Sustainability at TYP SA increasingly relies on innovation, data governance and digital transformation. The creation of our subsidiary TDS, specialising in technology services, with areas of work linked to BIM and digital twins, software development and data governance, reinforces a vision in which digitalisation is not an end in itself, but a lever to **improve productivity, efficiency, safety and sustainability** in projects and internal processes.

With regard to **resource efficiency and extending the useful life of assets**, TYP SA integrates technology for smarter infrastructure management: real-time data capture, advanced analytics, IoT, predictive models and digital twins aimed at anticipating failures, optimising maintenance and ensuring operational continuity, whilst also incorporating **cybersecurity** as an essential element to protect critical systems.

In the field of construction supervision, the strengthening of management tools during the construction phase and quality control helps to improve traceability, monitoring and decision-making based on quality, environmental, and health and safety criteria.

### INTERNAL SOCIAL PERFORMANCE AND CORPORATE GOVERNANCE

TYP SA's contribution to the SDGs is also underpinned by internal performance and our supply chain: respect for human rights, integrity, health and safety, and the promotion of equality, diversity and inclusion are reflected in improvements to the preventive system, training and the updating of procedures, including the strengthening of coordination roles and the maintenance of certifiable frameworks in health and safety.

In terms of **integrity and the fight against corruption**, TYP SA continues to strengthen its management system through actions such as the roll-out of self-assessment tools, declarations of absence of conflict of interest and the implementation of benchmark standards in anti-bribery management systems across its offices in different geographical areas.



**SOCIAL COOPERATION**





TYP SA complements its technical activities with a social dimension linked to capacity building. Through the TYP SA Foundation for Development, it promotes technical education and university cooperation, offering scholarships and strengthening academic partnerships, thereby contributing to the creation of opportunities and local development.

**TRANSPARENCY AND CONTINUOUS IMPROVEMENT**

This year, TYP SA has taken a further step towards transparency and accountability by voluntarily producing its Sustainability Report, designed as a tool for management and continuous improvement. Within this framework, a double materiality analysis has been carried out, enabling the identification and prioritisation of the most relevant issues, both in terms of their impact on the environment and their effect on the Group's performance and strategy, thereby reinforcing the coherence between risks, opportunities and decision-making. Furthermore, the establishment of the Sustainability Committee strengthens internal governance to coordinate lines of work, promote common objectives, and ensure monitoring and implementation across the various areas.

The following table clearly illustrates our contribution, through corporate projects and actions, to the SDGs on the issues identified as material for the company.

Material Issue	SDGs	Link to Projects or Actions
Talent attraction and management		<ul style="list-style-type: none"> <li>Consolidation of the TYP SA Learning platform.</li> <li>Training in energy, construction and infrastructure via the Structuralia platform.</li> <li>Gofluent language platform.</li> <li>Partnerships with leading public and private universities and business schools.</li> <li>Collaboration with technical universities in Spain, Sweden, the US, Saudi Arabia and the UK.</li> <li>Active participation in business and professional organisations, forums, conferences and seminars.</li> </ul>
Corporate integrity and ethical governance		<ul style="list-style-type: none"> <li>MC2's adherence to TYP SA's Integrity Management System.</li> <li>Certification of the Chile branch under the ISO 37001 Anti-Bribery Management Systems standard.</li> <li>Extension of the self-assessment tool integrity to the Spanish subsidiary MC2 and the branches in Peru and Chile.</li> <li>Declaration of absence of conflict of interest signed by the senior management of all TYP SA Group entities.</li> </ul>
Use of resources		<ul style="list-style-type: none"> <li>Project to reduce unaccounted-for water and optimisation of energy efficiency.</li> <li>Floatyp-wave innovation project.</li> <li>PVGRAd platform.</li> <li>Improvements to the GIO tool.</li> </ul>
Value for clients and end-users		<ul style="list-style-type: none"> <li>GEOdana.</li> <li>Sustainable Urban Drainage Systems (SUDS).</li> </ul>

Material Issue	SDGs	Link to Projects or Actions
Climate change adaptation		<ul style="list-style-type: none"> <li>Forest reforestation plan, an initiative promoted by MEXTYP SA.</li> <li>Development, for projects under €10 million, of the Practical Guide to Climate Proofing, funded by the ERDF and the FTJ, and the interactive digital tool Hediva.</li> <li>Technical support for the identification of climate risks, vulnerability to climate change and the scaling of adaptation and resilience measures for the Xochi - Corredor de las Flores project (Guatemala).</li> </ul>
Decarbonisation		<ul style="list-style-type: none"> <li>Consultancy services for the feasibility study and preliminary design for the construction of the Dhaka Metro.</li> <li>TYP SA Group carbon footprint reduction plan.</li> <li>NZEISHB project: an industrialised, nearly zero-energy social housing system.</li> </ul>
Communities		<ul style="list-style-type: none"> <li>TYP SA Foundation for Development.</li> <li>Environmental and Social Management Plan for a circular economy centre in Ghana.</li> <li>Policy dialogue, green city action plan for the municipality of Bishkek, Kyrgyzstan.</li> </ul>
Biodiversity		<ul style="list-style-type: none"> <li>Consultancy for the implementation of a marine resource conservation project in Central America.</li> <li>Assessment of the environmental and social impact of the single-cargo terminal at the Port of Luanda, in line with our commitment to the responsible business principles of the United Nations Global Compact and the UN Sustainable Development Goals (SDGs).</li> </ul>
People: wellbeing and diversity		<ul style="list-style-type: none"> <li>Improvements to the Occupational Health and Safety Management System. Renewal and extension of the scope of ISO 45001 certification.</li> </ul>
Data processing		<ul style="list-style-type: none"> <li>TYP SA Digital Solutions (TDS).</li> </ul>

# Featured Activities of the Year

## ROADS

In **Spain**, we are preparing the detailed design for the Rekalde motorway bypass, in Bilbao, with a length of 2.2 km, and running through a tunnel for the majority of the stretch. The bypass aims to eliminate an urban barrier.

We prepared the preliminary and detailed design for the widening of the motorway, Ronda Litoral, Barcelona, to four lanes on a 3.5 km section, and the detailed design to convert a 7.6 km stretch of the conventional CV-60 road to dual carriageway in Valencia. We also carried out the health and safety coordination of the works to take 3.2 km of the A-5 motorway underground in Madrid, the design of the A-42 motorway expansion with a third lane in each direction added over a 11.5 km stretch, also in Madrid, and the detailed design of the upgrade of the AP-4 and A-4 intersection in Cadiz.

We have also drawn up the layout and detailed design to update the section of the A-21 motorway in Huesca, the detailed design of the C37 ring road of les Preses y Olot, and we carried out the construction supervision of the works to improve the connection between the A-2 and the B-40 in Barcelona, to increase the capacity.



Olot ringroad, Barcelona

In the **United Kingdom**, we worked on the detailed design for the conversion to dual carriageway of 17.7 km of the A465 road, contributing to the design of 12 bridges, retaining walls, and drainage systems.

In **Portugal**, we prepared the detailed design for the 11 km connection between the IC-35 and the IP-5, which includes a bridge over the Vouga River with a length of 900 m and another 450 m long, and the detailed design of the Estremoz bypass, a 3.2 km long stretch on the IP-2 road.

In the **United States**, we carried out the detailed design for the re-construction and widening of the I-10 Highway in Tucson, and the SR202L Santan Freeway, in Chandler, both in Arizona.

In **Peru**, we participated in the detailed design of sections 1 and 3 of the Peripheral Ring Road in Lima, and the detailed design of the Santa Rosa bridge and related works.

In **Panama**, we provided comprehensive project management services for the renovation and improved capacity of the Southern Corridor expansion in Panama City, and the detailed design of the 8.2 km Punta Sur section of the road to San Carlos.

In **Chile**, we supervised the 23 km of Route 24 improvement works, in Calama and we carried out the study to improve 67 km of Route 5, on Chiloé Island, correcting its layout.

In the **Dominican Republic**, we have prepared the preliminary design and documentation for the tender for the improvement of 19km stretch of the Juan Pablo Duarte highway, and the detailed design of the new 67.9 km San Pedro-Miches road.

In **Brazil**, we have prepared the feasibility studies, and functional, preliminary, and detailed design for the new connecting road between Planalto Paulista and Baixada Santista, in São Paulo, and we are working on the preliminary and detailed design for the improvement of 605 km of roads in the state of Parana.

In **Saudi Arabia**, we are developing the preliminary design of a 6.5 km long access road to the Trojena region (NEOM), and we carried out the road safety audit for the Qiddiya project.

In **India**, we were responsible for the comprehensive project management, construction and operation of two 4.7 km twin tunnels and the access (13.3 km in total) which connect two important motorways in Mumbai to reduce travel times.

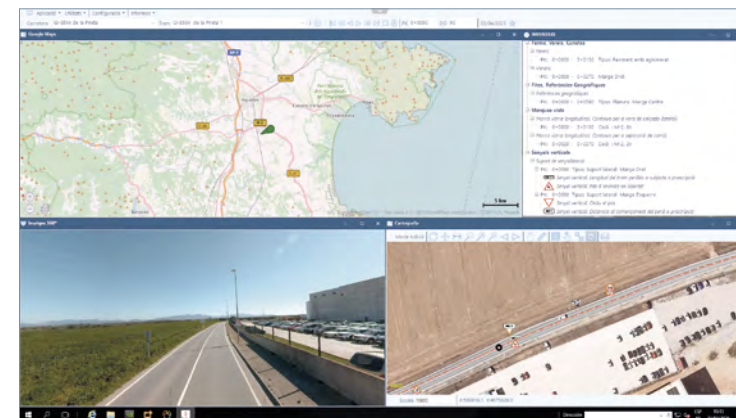


A465 road, in the United Kingdom

## OPERATION AND MAINTENANCE MANAGEMENT

In 2025, the operation and maintenance management of infrastructure continues to be a fundamental pillar for ensuring its safety, operational efficiency, and long-term sustainability. Proper planning and rigorous maintenance not only extend service life and optimise associated costs, but also ensure regulatory compliance and contribute significantly to economic, social, and environmental progress, improving citizens' quality of life.

In **Spain**, we can highlight the participation in the updating of the geometric inventory and existing road assets of the Madrid regional road network which extends over 2,986 km, and the implementation of a road management system for the Provincial Council of Girona network.



Road management system for Girona

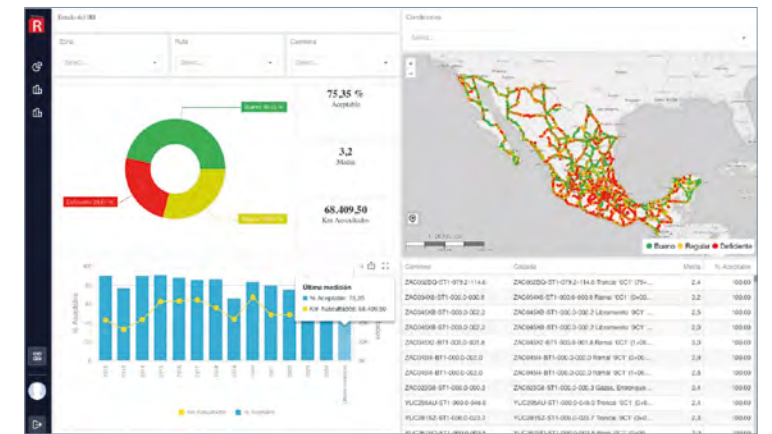
We continue to strengthen our position as technical leader in instrumentation, inspection and structural evaluation in the field of roads and high-speed rail in Spain. We are working on the advanced monitoring of unique bridges of the National Road Network, the Santos Bridge (A-8), the Samprón Bridge (A-6), and the Neira I and Neira II bridges (A-6), through the installation of sensors to control their behaviour statically and dynamically.

We also participated in the inspection of a total of 90 bridges on the Vitoria-Bilbao-San Sebastián high-speed rail line, including load tests, design review and the definition of the actions to be carried out after the analysis prior to their commissioning.

We also carried out the inspection and inventory of transit works on regional and national networks, such as the systematic review of structures on the regional network of the Region of Murcia and more than 4,000 structures on the State Road Network, southern area, including special inspections, assessment reports, and maintenance proposals.

In **Uruguay**, we are working on the implementation of a road asset management system for the national road network.

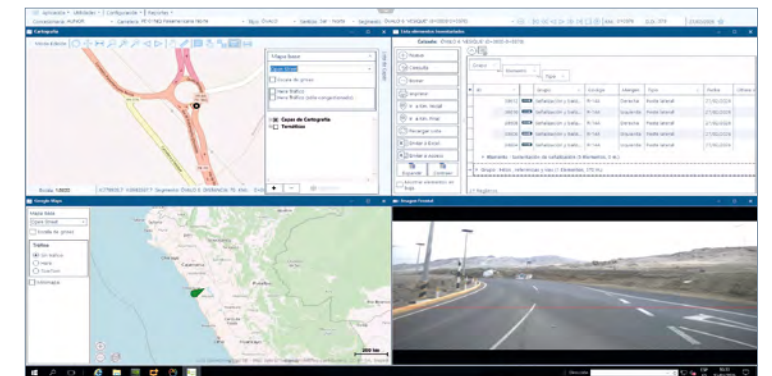
In **Mexico**, we are implementing a management system for the Secretariat of Infrastructure, Communications and Transport, covering the entire network of toll-free federal highways, totalling 40,000 km.



Management system for the Secretariat of Infrastructure, Communications and Transport of Mexico

In **Belize**, we are carrying out a road safety study using the iRAP methodology, covering nearly 900 km of the country's main roads, as well as inspection and testing services for the Supervising Administrative Agent of the Guadalajara-Colima motorway, as part of a concession extension.

In **Peru**, a diagnosis and development of the Road Asset Management System methodology for the national road network is being undertaken; and in **Chile**, of particular environmental importance, there is a project involving noise analysis and measurements on routes in the southern regions (Zona Austral), including the assessment of pavement conditions and traffic volume data.



Road asset management on the non-concessed national road network, Peru

## SUSTAINABLE MOBILITY

The companies of the TYP SA Group support and participate in policies and strategies aimed at achieving sustainable urban mobility, providing citizens with access to clean, energy efficient public transport optimised by the use of technology.

In **Spain**, we are preparing the Sustainable Mobility Plan for Seville and its metropolitan area. High-capacity public transport corridors are being defined to serve mobility routes with a large volume of trips and a high share of private vehicle use. Subsequently, specific measures will be established to encourage a modal shift and significantly improve environmental indicators.

Additionally, in Seville, we have developed the Metropolitan Transport, a very valuable tool that facilitates informed decisions to strengthen the public transport system rather than private vehicle use.



Sustainable Urban Mobility Plan for Seville

In **Egypt**, we are carrying out a mobility study in the city of Sheikh Zayed, belonging to the metropolitan area of Cairo. A study of traffic, intelligent transport and mobility plan will be carried out for the city, which stands out for following an advanced urban planning model and will have the most developed intelligent mobility systems.



Mobility studies, Cairo metropolitan area

In **Chile**, the study to improve the process of assigning traffic flows to the road network has been completed, refining data collection at survey points. In this way, greater efficiency is achieved in the management of the country's road network, along with an optimisation of the resources allocated to it.



Sustainable Urban Mobility Plan for Seville

## RAIL DESIGN AND CONSTRUCTION SUPERVISION

In **Spain**, we are preparing the detailed design of the high-speed line on the Madrid-Basque Country-French border high-speed line Piernigas-Pancorbo, the preliminary study of the Antequera-Granada-Almeria railway stretch and the design of the traction substations for the Teruel-Sagunto railway line. We are also supervising the integration of the high-speed in Valencia, the intermodal terminal of Valencia-Fuente San Luis and the logistic platform at Parc Sagunt II.

In Barcelona, we led the construction supervision of the remodelling works of the Montcada Bifurcación railway station and the new rail access to the airport. Other supervisory work includes the Altzola railway bypass on the Bilbao-Donostia line, the new railway station in Usurbil, Gipuzkoa, and the passenger terminal building at the new Irún station in the Basque Country.

We are also involved in the works for the new railway viaduct over the River Ebro, in the high-speed section between Castejon and Pamplona and we are providing support services for construction management in the remodelling of the Campo Grande station in Valladolid and Chamartin in Madrid.



Campo Grande station, Valladolid, Spain

In **Canada**, we provided specialised consultancy for the reinforcement of the railway slab, almost a century old, at Union Station, in Toronto. A dynamic study of the slab will allow it to be adapted to future traffic, increasing the speed and level of service of the Toronto commuter network, which is the most congested in Canada.

In the **United States**, we are carrying out the design for the track system and Overhead Contact Systems (OCS) for 171 miles on the high-speed rail line between Merced and Bakersfield, in California, the first of its type in the country.

In the **United Kingdom**, we continue to have a leading role in the project development of the HS2 high-speed line, carrying out the design and support services for different stretches between London and Birmingham.

In **Ireland**, we prepared the design of the DART+South West line to renew and extend 20 km of electrified track in Dublin. We also worked on the preliminary design for the improvement of the Cork commuter network, which extends over 60 km and will use battery-powered trains.

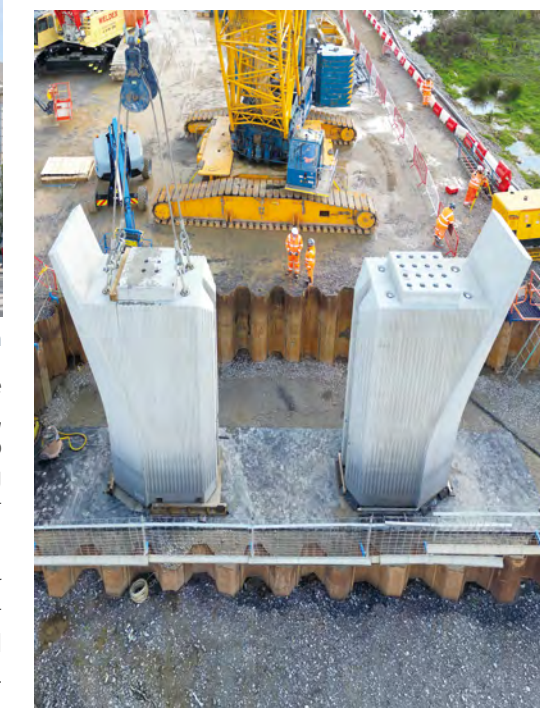
In **Sweden**, we worked on the preliminary design to increase the capacity of the Norge-Vänerbanan line between Öxnared and Göteborg, including a new stabling track and the renewal of the signage.

In **Norway**, we collaborated with the national railway authority on the works at Moss station, as part of the Sandbukta-Moss-Såstad project.

In **Portugal**, we are in charge of the renovation project for the 27 km stretch Pocinho-Barca d'Alva on the Duero line. We also carried out the feasibility study for the new 37 km Vale do Sousa line, and the modernisation of several stretches on the North Line.

In **India**, we carried out the construction supervision and management for 68 km of infrastructure and trackworks on the Digras-Palshi stretch on the Yavatmat-Nanded line.

In **Tanzania**, we carried out the design review and supervision and project management of the works on 506 km of railway line from Tabora to Kigoma.



HS2 high-speed railway works, United Kingdom

## METROPOLITAN SYSTEMS

In **Spain**, we continue with the construction management of the extension of the Madrid metro line 11, with a length of almost 7 km, and which includes the new stations of Comillas and Madrid Río. Furthermore, construction management of the extension of line 5 to the airport has commenced, and includes a 1.7 km tunnel and a new connecting station.

We are also developing the comprehensive project and construction management of the completion of the tramway system to Alcalá de Guadaíra, in Seville, and the detailed design of architecture and MEP systems on the Guadalmedina-Hospital Civil stretch, on the extension of line 2 of Malaga metro, which is an underground section of 1.8 in length with three stations.

In **Sweden**, we continue to provide technical support for the extension of the Stockholm metro blue line, and we have started supervision of an 11 km stretch with 7 new stations. We are also preparing the detailed design for the new yellow line (8 km of tunnel and 3 stations) between Fridhemsplan and Älvsjö.



Stockholm Metro works. Blue Line

In **Canada**, we carried out the detailed design and construction supervision of the tunnelling work on Toronto Metro's Eglinton Crosstown West Extension, with a double tunnel of 6.3 km, and its elevated viaduct of 1.5 km. We are also working on the design and tunnel extension of the Yonge North line of 7 km, in the same city.

In **India**, we carried out the construction management of the Kanpur metro network, with a length of 32 km and 30



Agra Metro, India

stations, and of the Agra network with a length of 29 km and 27 stations. We also provided project and construction management services for the first phase of the Vijayawada metro, with two lines with a length of 38.4 km and 33 stations.

In **Portugal**, we are working on the conceptual design for the extension of the South Tajo Metro. The light overground metro has a total length of 7 km and 10 stations, and includes the integration with other modes of transport.

In **Australia**, we continue providing technical support during the tunnel works and excavation areas of 5 stations along the 11 km, twin-tube section between The Bays and Sydney Olympic Park on the Sydney Metro West line.

In **Saudi Arabia**, we prepared the tender design for the first phase of the Riyadh metro Line 7 extension. This new 66 km long line between Qiddiya and Diriyah Gate will have 19 stations, 16 of them underground.



Riyadh Metro, Saudi Arabia

In **Egypt**, we are carrying out the feasibility studies for the extension of the Cairo metro line 1. The scope consists of the 19 km long extension of the line, with 14 stations, from the current New El Marg station to the city of Shebin El Qanater, in the metropolitan area of Cairo.

## AIRPORTS

In **Australia**, we carried out the tender design for the new runway at Melbourne Airport. The project includes a new 3,180 m runway with its parallel taxiway, the upgrade of the existing runway, and the shortening of another to optimise operations.

In **Iraq**, we provided technical consultancy for the Baghdad Airport tender. The project includes a new terminal, cargo facilities, parking areas, and the modernisation of existing infrastructure, aiming to handle up to 15 million passengers per year.



Baghdad Airport, Iraq

In **Panama**, we managed and supervised the rehabilitation of the two runways, of 2,682 m and 3,050 m, and the taxiways at the airport. The work was carried out whilst guaranteeing the continued service and minimising the impact of operations.

In **Saudi Arabia**, we carried out the expansion and renovation of Terminals T1 and T2 at Medina airport, with a capacity of 14.6 and 5.5 million passengers per year respectively, including the conceptual design of the baggage handling system (BHS).

We also prepared the design of two new remote aircraft parking aprons at King Khalid International Airport in



King Khalid Airport, Riyadh, Saudi Arabia

Riyadh, which includes a total of 17 stands, fuel hydrant network, CCTV system, the adaptation of the associated taxiways.

In **Mexico**, we carried out the detailed design for the expansion, rehabilitation and reconfiguration of the airports of Tijuana and del Bajío, states of Baja California and Guanajuato. Scope includes the study of its current status, the design of the aviation platforms and handling areas refurbishment, and the tender documents for the contract.

In **Chile**, we prepared the detailed design for the Atacama airport extension which includes the expansion of the passenger terminal building, 4 boarding bridges, new buildings (administrative, electronic and IT systems, and logistics), improvements of the control tower, runway platforms and taxiways.

In **Peru**, we provided construction supervision of the rehabilitation of the 3.5 km long runway at Jorge Chávez International Airport, including reinforcing the pavement and renewing the luminous visual aids (AGL) system.



Jorge Chávez Airport, Lima, Peru

## PORTS

In **Uruguay**, we are supervising the final phases of the expansion works at the Nueva Palmira port terminal for operation of liquid bulk cargo, together with the expansion of the mineral operation facilities.



Bulk terminal at the Port of Nueva Palmira, Uruguay

In **Brazil**, we are providing engineering services for the maintenance and improvement works on the breakwater pier of reinforced concrete box girders in the Port of Açú, state of Rio de Janeiro.

In **Peru**, we completed the construction supervision at the multi-purpose north terminal of El Callao port, for the bulk goods area, with 12 vertical silos, two continuous unloaders, a container storage yard and access for rolling cargo.

In **Honduras**, we developed the detailed design of the maritime elements necessary for the permanent and safe docking of a Floating Gas Storage Unit (FSU) in Puerto Cortés.

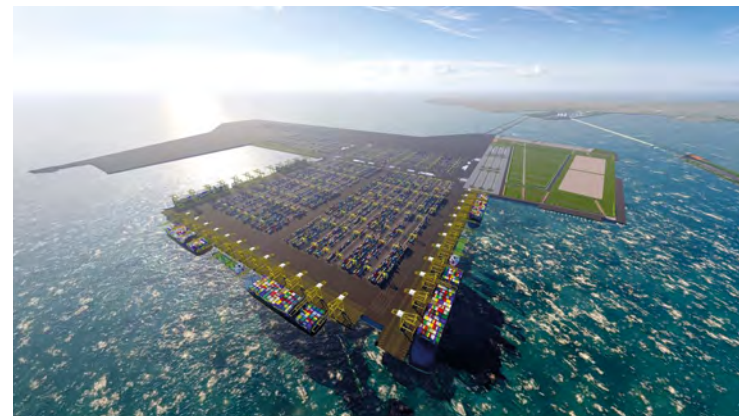
In the **Democratic Republic of the Congo**, we worked on the initial analysis and preliminary design for the development of the port of Kalundu, on Lake Tanganyika, to reorganise and modernise the port and its access, as well as the extension of the existing breakwater piers, taking into consideration climate resilience criteria.

In the **Comoros**, we carried out the Moroni Port expansion project, consisting of the extension of the breakwater, the construction of a backfilled quay for container traffic, the dredging of the dock, the management of the port superstructure and the construction of an access road.

In **Spain**, we led the construction management of the electrical installation connection (OPS onshore power supply) to ships at the port of Valencia; the detailed design of the new berths for petroleum products and auxiliary services at the port of Barcelona; the preliminary design of the expansion of the Algameca naval station in Cartagena, to increase berthing capacity; and the design

of the foundations for two industrial warehouses at Juan Gonzalo Quay, in Huelva.

In **India**, we were in charge of the comprehensive project management for the Greenfield Vadhan port in Dahanu, Maharashtra state. This infrastructure will be able to house ultra large container vessels (ULCV) and will be built on an artificial island in the Arabian Sea, with draft depths of more than 25 m and an offshore breakwater of 10.14 km, together with other installations.



Greenfield Vadhan Port in Dahanu, India

In the **United Kingdom**, we carried out the detailed design for a ro-ro terminal at the port of Immingham, Lincolnshire. The terminal comprises, on the marine side, of a new quay and its associated infrastructure, an access jetty, a pipe bridge, and an access ramp; and, on the landside, parking areas, buildings, roads, and a bridge over an existing railway line.



Immingham Port, in Lincolnshire, United Kingdom

## HYDRAULIC INFRASTRUCTURE

### Conventional water resources

#### Demand management and loss reduction

In **Brazil**, we have developed the reference standards for loss reduction and control, and for the reuse of treated effluents, supporting the National Water and Basic Sanitation Agency.

In **Costa Rica**, we continued with the unmetered water reduction and energy efficiency programme (RANC-EE) in the metropolitan area of San José and in seven of the country's main systems.

#### Urban water cycle: supply, sanitation, and efficiency

In **Brasil**, we were involved in the framework contract for studies and designs of water supply and sanitary sewerage systems in the municipalities of Saneatins/Goiás, Recife and Maceió/Maranhão.

In **Mexico**, we carried out the detailed design of the aqueduct El Tunal (Durango), with a 1,600 l/s pumping station, and the expansion of the existing water treatment plant to supply drinking water to a population of 612,000 inhabitants.

In **Paraguay**, we provided comprehensive management services of the implementation of sanitation programmes in 5 cities.

#### Irrigation and agricultural water-use efficiency

In **Chile**, we carried out the control, management and monitoring of the 50 km long Laja Diguillín Canal, in the Ñuble Region, which irrigates 44,630 ha.

#### Regulation, storage, and dams

In **Chile**, we prepared the design of the Bollenar reservoir (O'Higgins), with a capacity of 59 hm<sup>3</sup> and a dam of 106 m to irrigate 9,000 ha; and the feasibility study of the Longaví reservoir (Maule) with an estimated capacity of 100-200 hm<sup>3</sup> for 30,000 ha.

### Non-conventional water resources

#### Regeneration, reuse, and resource-oriented wastewater treatment

In **Brazil**, we carried out the preliminary design for the expansion of the São Miguel Wastewater Treatment Plant, (São Paulo), part of the River Tietê Decontamination Programme and, in Spain, we led the control and diagnosis of 420 urban WWTPs in the Castilla La Mancha region, in accordance with Directive 91/271/EEC.

#### Desalination integrated into the system

In the **United Kingdom**, we participated in a framework contract for the development of the preliminary design and technical advisory services during the design-build of two desalination plants in Norfolk and Lincolnshire, with capacities of 60,000 and 50,000 m<sup>3</sup>/day respectively, planned under Anglian Water's long-term water supply programme for the region.

In **Saudi Arabia**, we supervised the concession of several treatment plants under a PPP scheme, highlighting the desalination plants Shuaibah 3 (600,000 m<sup>3</sup>/day) and Rabigh 4 (600,000 m<sup>3</sup>/day), and the wastewater treatment plants Medina 3 (200,000 m<sup>3</sup>/day) and Taif (100,000 m<sup>3</sup>/day).



Medinah wastewater treatment plant, Saudi Arabia

### Hydrological planning and increased resilience to extreme events

In **Western Africa**, we carried out the assessment study of water withdrawals and water demand forecast in the Volta Basin, and in **Peru**, the evaluation of alternatives and detailed design of the urban storm drainage of the cities of Paíta and Chiclayo, and the design of the drainage system in the Tambopata Sector.



Urban storm drainage in the city of Paíta, Peru

In **Spain**, we took part in the review and update of flood risk planning in Andalusia. We also continued providing support services for the implementation of flood risk management plans in the Guadiana and Tajo River Basin Districts, and for the detailed design of flood protection elements along the Júcar River, together with the review and monitoring of the 2022-2027 Hydrological Plan for the Júcar River basin.

## ARCHITECTURE AND BUILDING

### HOSPITALITY

In **Portugal**, we carried out the design and construction management of The Social Hub Lisbon hotel (440 rooms) in Cascais, and in **Spain**, we developed the architectural designs for two 5 star GL hotels, with 1,100 and 250 rooms, in Meloneras, Gran Canaria.



The Social Hub Hotel, in Cascais, Portugal

### REFURBISHMENT, CONSERVATION, AND MAINTENANCE

In **Spain**, we are responsible for quality control of the rehabilitation of the former Legazpi Market into municipal offices, and for the engineering of the refurbishment of two office buildings on Paseo de la Castellana in Madrid. Additionally, we are managing the comprehensive renovation of the Hotel Presidente in Ibiza, converting it into a 5 star hotel with 219 rooms.

### UNIVERSITIES

In **Spain**, we carried out the engineering design for the renovation and expansion of the Technical School of Industrial Engineering of Barcelona, with 20,600 m<sup>2</sup>, and in **Angola**, we are involved in the design of a unique library in the Luanda Technological Park.



Luanda Technological Park Library, Angola



Goodman Data Centre in Amsterdam, The Netherlands

### DATA CENTRES

In **Spain**, we worked on the design and construction management of a 10 MW data centre in Barcelona, and on the detailed design of the hydraulic and electrical infrastructure of two AWS data centres in Aragón. In the Netherlands, we developed the structural design for two data centres for Goodman, in Amsterdam.

### INDUSTRIAL ARCHITECTURE

In **Spain**, we prepared the detailed design for the MEP systems, Mechanical, Electrical and Public Health, of the PowerCo (Volkswagen) battery gigafactory, in Sagunto, Valencia.

### STATIONS

In **Spain**, we carried out the construction supervision of the new underground station of Sant Feliú de Llobregat, in Barcelona, and the design for the refurbishment of the Bermeo station, in Vizcaya.

### DEFENSE

In **Spain**, we supervised the works of five residential buildings for the Marine Infantry School, in Cartagena.

### HOSPITALS

In **Peru**, we were responsible for the design of the new oncology hospital IREN Sur, in Arequipa, with a capacity for 352 beds and a surface area of 58,600 m<sup>2</sup>.

### SPORTS FACILITIES

In **Saudi Arabia**, we carried out the detailed design for the sports city and high performance centre of the AIUla Football Club, in the region of Medina, with a total built area of 170,000 m<sup>2</sup>, and in several locations in **Brasil, France, Indonesia, Portugal** and **Thailand**, we carried out the design for surf pools using Wavegarden technology.

In **Spain**, we developed the preliminary advanced design for the new Palau Blaugrana roof, Barcelona, a multifunctional sports pavilion for 15,000 spectators.

## URBAN DEVELOPMENT

In **Saudi Arabia**, we are preparing the Urban Development Plan for the regions of Yanbu, Umluj, Alwajeh and Duba, to add value to the adjacent major projects (NEOM, Amaala, etc.) and to preserve the local urban identity. Additionally, we are developing the master plan and infrastructure design for a 44.2 km<sup>2</sup> military-industrial city, applying efficient and sustainable criteria.

Also in **Saudi Arabia**, we continue to work on the Sports Boulevard in the city of Riyadh, a transformational project in the infrastructure corridor of over 130 km, in the city's main urban axis, green and sustainable, designed for public use and oriented towards sports, arts, and culture. In 2025, the first sections were opened to the public, receiving a very positive response from citizens.



Sports Boulevard in the city of Riyadh, Saudi Arabia

In the **United States**, we worked on the location and survey of utilities affected by the design of the new facilities at Barstow International Gateway Dry Port, California. This project, for the Burlington Northern Santa Fe Railway (BNSF) includes the construction of approximately 45 km of underground utilities.

In **Spain**, we participated in the important urbanistic developments in Madrid. As part of the growth plans for the city, we worked on the developments in the southeast, engaged in the construction management of Los Berrocales and Cañaveral developments, and the studies for the 'Nueva Centralidad del Este', together with the urban development of the Parque Central within the Madrid Nuevo Norte plan.



Development of the southeast of Madrid. Los Berrocales



Development of the southeast of Madrid. El Cañaveral

In Barcelona, we carried out the project management of the redevelopment of the Rambla and the construction supervision for the urban integration to cover the large shaft and surface interventions for metro lines 4 and 9 La Sagrera; and in Irun, Gipuzkoa, we led the construction management of the development design of the San Miguel-Anaka area.

## ENVIRONMENTAL QUALITY AND CONSULTING

In **Spain**, we continue providing support services for the environmental assessment of plans and projects undertaken by Canal de Isabel II, in Madrid. We prepared the programme to monitor the status of inland waters and the control of protected areas, in the Guadalquivir and Segura basins, together with the sampling and analysis of wastewater and inland water, and the bathing water profiling in the Guadalquivir basin. We have also implemented a water quality monitoring network for the rivers of Galicia Costa.

In **Brazil**, we have updated the country's Wastewater Atlas, focusing on domestic wastewater discharges to optimise water resource management and evaluate impact on rivers and lakes.

In **Indonesia**, we have provided support services to develop a sustainable and resilient infrastructure design guide for Jakarta's East-West MRT line, including sustainability assessment and the preparation of design reference documents.



Quality control of the water in the rivers of Galicia Costa

We have also carried out regeneration works on the beaches of Valencia and Alicante, and we supported climate change adaptation in EU-funded projects. We also provided support services for the restoration work of riverbeds in the Jucar River Basin, and we developed management tools for the Somontes Shooting Club in Madrid, located within the protected area of Monte del Pardo, by preparing the Forest Management Plan for Fire Prevention.



Restoration of riverbeds of the Jucar basin



Public transport in Yakarta, MRT

In **Türkiye**, we offered support to the public development and investment bank (ILBANK) in the reconstruction of infrastructure in provinces affected by the 2023 earthquakes, guaranteeing compliance with environmental and social standards.

In the **United States**, we have prepared an Environmental Management Plan for the construction of new lanes on the Interstate highway I-10, in Arizona. The project, which crosses the Gila River Indian Community (GRIC), required the implementation of environmental commitments in coordination with this community.

## ENERGY

In **Spain**, we continue involved in the owner's engineering for the GECAMA hybrid plant, in the province of Cuenca. This project, the largest of its kind in the country, integrates the existing wind farm with a new photovoltaic plant and a battery plant.



Existing GECAMA wind farm, Minglanilla, Cuenca



GECAMA hybrid plant, Minglanilla, Cuenca

In the **United Kingdom**, we carried out the owner's engineering for high voltage interconnection infrastructure projects for four 132/33 kV elevator substations and associated high voltage underground lines.

In **Rumania**, we were responsible for the owner's engineering for the Vacareni wind farm, with a capacity of 102 MW, together with its corresponding grid connection infrastructure.

In the **United States**, we worked on the owner's engineering of the 196 MWp Camino Solar power plant, in Texas.

In **Chile**, we can highlight the owner's engineering of the Tirana Oeste solar park, in Pozo Almonte, Tarapacá region. The plant has a nominal capacity of 168 MWp and a battery energy storage system with a capacity of 336 MW / 1,344 MWh.

In **Saudi Arabia**, we participated in the development of three large windfarms which have a total capacity of 4.2 GW and in six photovoltaic plants, with a total capacity of 11 GW.



Windfarm in Saudi Arabia

In **Morocco**, we provided support services to the photovoltaic project NOOR ATLAS, consisting of six solar plants, distributed across several regions, with a total capacity of 234 MW.

In **India**, we were engaged in the engineering consultancy and project management for the development of a 10MW wind energy installation in the port V.O. Chidambaranar, a prototype the first of its kind in India.

In **Egypt**, we carried out the preliminary and detailed design of the Shawdan wind farm (Gigawind) located in Rash Sukeir, on the coast of the Red Sea. The farm will have a total capacity of 900 MW, achieved through the installation of 82 next-generation wind turbines, each with a unit capacity of 11 MW.

In **Guyana**, we were involved in the detailed design of electrical substations and transmission lines in the Demerara-Berbice interconnected system, which includes the construction and expansion of various electrical infrastructures.

## SUPPORTING FINANCIAL INSTITUTIONS IN DEVELOPMENT PROGRAMMES

In **Cameroon**, we provided support services to the Economic Development Support Programme through the promotion of value chains and private initiatives, for inclusive and sustainable growth. Funded by the European Commission.

In **Burkina Faso**, we were involved in the review and elaboration of the funding proposal for the programme "Climate Resilience through the Protection and Rehabilitation of Degraded Soils", a proposal made by the Green Climate Fund (GCF) that benefits 250,000 people. Funded by the German Society for International Cooperation (GIZ).

In **Burundi**, we carried out the study of the joint trading strategy between traders from Burundi and the Democratic Republic of Congo, analysing supply and distribution systems and recommending measures to improve cross-border trade. Funded by the Ministry of Trade, Transport, Industry and Tourism of the Republic of Burundi, and the World Bank.

On the **Ivory Coast**, we prepared a development strategy for the cocoa and coffee sectors, within the framework of the "Support Project for Cocoa Sector Governance in Ivory Coast (PAGFIC)". Funded by the Coordination Unit for the PAGFIC, and the African Development Bank.



Development of cacao on the Ivory Coast

In **Niger**, we were involved in a project to develop a shared vision and strategic plan for the sustainable management of natural resources in the Niger River basin, establishing a five-year strategic plan. Funded by the Netherlands Enterprise Agency.



Market on the bank of the Niger River

In the **Democratic Republic of Congo**, we collaborated in the promotion of public-private dialogue platforms as part of the "TRANSFORME" project, to encourage and engage the participation of the private sector in reforms to the business environment for MSMEs. Funded by the Ministry of Industry and SMEs, and the World Bank.



Markets in Burundi



## World presence

### PERMANENT OFFICE NETWORK

#### AFRICA

##### KENYA

Upper Hill - Kiambere Road - Woodlands Bussines Park - Suite B&C (Ground floor)  
P.O. Box 66266-00800 - Nairobi - Kenya  
Tel. +34 690 745 298 - africa@typsa.com

##### TANZANIA

Msasani Road 50 – Office 01  
P.O. Box 38263 - Dar Es Salaam - Tanzania  
Tel. +255 760 294 337 - tanzania@typsa.com

##### TUNISIA

Rue du Lac Huron, n°1 - Inmueble Yamama  
Les Berges du Lac - Tunisia  
africa@typsa.com

#### ASIA

##### BANGLADESH

Road #126 - Building 14-A - 7B - Gulshan I  
1212 - Dhaka - Bangladesh  
Tel: +880 9 642 555 001 - africa-asia@typsa.es

##### INDIA

7th Floor - Building No. 9 - Tower B  
DLF Cyber City - Gurugram  
122002 (Haryana) - India  
Tel: +91 981 175 1529 - skolli@typsa.com

#### AUSTRALASIA

##### AUSTRALIA

- Suite 305, 50 Holt St. - Surry Hills  
Sydney NSW 2010 - Australia  
Tel: +61 420 340 270 - australia@typsa.com

#### - EDG CONSULTING

Level 1 - 18 Wandoo Street  
Fortitude Valley - QLD 4006 Australia  
Tel: +61 416 132 343 - Ian.Shipway@edgconsult.com.au  
- 27 Budd St. - Collingwood  
VIC 3066 - Australia  
Tel: +61 412 955 495 - Adam.Lander@edgconsult.com.au

#### EUROPE

##### BELGIUM - AGRER

Av. Louise, 251 - b 23  
1050 - Brussels - Belgium  
Tel: +32 (0) 2 640 63 10 - agrer@agrер.com

##### IRELAND

##### - TYPsa LTD

Fitzwilliam Hall, 26 Fitzwilliam Pl  
Dublin 2, D02 T292 - Ireland  
Tel: +353 87 931 8056 - info-ie@typsa.com

##### - CSEA (CLIFTON SCANNELL EMERSON ASSOCIATES)

3<sup>rd</sup> Floor The Highline - Bakers Point - Pottery Road  
Dun Laoghaire, Co. Dublin - A96 KW29 - Ireland  
Tel: +353 01 288 5006 - info@csea.ie

##### NORWAY

Trelastgata 3 - 12 etg.  
0191 Oslo - Norway  
Tel: +47 922 57055 - info-no@typsa.com

##### PORTUGAL - TECNOFISIL

Avda. Luis Bivar, 85 A  
1050-143 Lisboa - Portugal  
Tel: +351 213 504 480 - geral@tecnofisil.pt

**SPAIN****A Coruña**

Anxo Senra Fernández 25 - Oficina 1º - Local 3  
15670 - Culleredo - A Coruña  
Tel: +34 981 160 342 - coruna@typsa.com

**Balearic Islands**

Jesús, 38 - 3º - 1º  
07010 - Palma de Mallorca  
Tel: +34 871 034 995 - illesbalears@typsa.es

**Barcelona**

C/ Roselló i Porcel 21 - 3ª planta - Edificio Meridian  
08016 - Barcelona  
Tel: +34 934 879 199 - catalunya@typsa.com

**Bizkaia**

- Barrio Peruri, 33 - 2ª planta  
48940 - Leioa - Bizkaia  
Tel: +34 944 805 990 - euskadi@typsa.com

**- TEKNÉS INNOVACIÓN S.L.**

Polígono Industrial Urazandi - Edificio B - 3B  
48950 - Asua-Erandio - Bizkaia  
Tel: +34 944 810 261 - teknes@teknes.es

**Canary Islands**

Calle Castillo 41  
38003 - Santa Cruz de Tenerife  
Tel: +34 822 255 383 - lhernandez@typsa.com

**Madrid**

- Comera, 9  
28703 - San Sebastián de los Reyes - Madrid  
Tel: +34 917 227 300 - madrid@typsa.com

- Lanzarote, 15  
28703 - San Sebastián de los Reyes - Madrid  
Tel: +34 917 227 300 - madrid@typsa.com

**- INTEMAC (office and materials laboratory)**

Bronce, 26 - 28  
28850 Torrejón de Ardoz - Madrid  
Tel: +34 916 753 100 - intemac@intemac.es

**- MC2 ESTUDIO DE INGENIERÍA S.L.**

Condesa de Venadito, 5A - 1ª Planta  
28027 - Madrid  
Tel: +34 915 197 477 - mc2@mc2.es

**- RAUROS ZM**

Calera, 3  
28760 Tres Cantos - Madrid  
Tel: +34 916 592 238 - rauroszm@rauroszm.com

**- TDS (TYP SA DIGITAL SOLUTIONS)**

Avenida Doctor Severo Ochoa, 47 - Planta 2ª  
28100 Alcobendas - Madrid  
Tel: +34 911 548 080 - central@teys.eu

**- ENVIRONMENTAL LABORATORY**

Lanzarote, 12  
28703 - San Sebastián de los Reyes - Madrid  
Tel: +34 916 639 625 - laboratoriomadrid@typsa.com

**Murcia**

- Madre Paula Gil Cano, 2  
Edificio Torre Jemeca - 7ª Planta  
30009 - Murcia  
Tel: +34 968 282 470 - murcia@typsa.com

**- ENVIRONMENTAL LABORATORY**

Avda. Teniente Montesinos, 8-2 Bajo F  
30100 Espinardo - Murcia  
Tel: +34 968 879 515 - laboratoriomurcia@typsa.com

**Seville**

- Balbino Marrón 3 - Portal A - 1ª planta - Módulo 5  
41018 - Seville  
Tel: +34 954 925 325 - andalucia@typsa.com

**- ENVIRONMENTAL LABORATORY**

Manufactura 1 - Local 1 - Polígono Pisa  
Mairena del Aljarafe - 41927 - Seville  
Tel: +34 954 188 044 - laboratoriosevilla@typsa.com

**Valencia**

- Botiguers 5 - 5ª planta  
Edificio Manuel Borso - Parque empresarial Táctica  
46980 Paterna - Valencia  
Tel: +34 963 379 220 - valencia@typsa.com

**- GBM (GREEN BLUE MANAGEMENT)**

Botiguers 5 - 5ª planta  
Edificio Manuel Borso - Parque empresarial Táctica  
46980 Paterna - Valencia  
Tel: +34 963 379 220 - valencia@typsa.com

**Zaragoza**

Allue Salvador nº 5  
50001 - Zaragoza  
Tel: +34 976 484 993 - aragon@typsa.com

**SWEDEN - TYP SA AB**

Barnhusgatan 22  
111 23 Stockholm - Sweden  
Tel: +46 8 108 804 - info-se@typsa.com

**UNITED KINGDOM - TYP SA LTD**

- 12<sup>th</sup> Floor - 5, Merchant Square  
W2 1AY - London - United Kingdom  
Tel: +44 (0) 208 194 9798 - info-uk@typsa.com  
- 3<sup>rd</sup> Floor - St. Paul's House, 23 Park Square South  
Leeds - LS1 2ND - United Kingdom  
Tel: +44 (0)113 512 9096 - info-uk@typsa.com  
- Lynch Wood Business Park  
Peterborough PE2 6FY - United Kingdom  
Tel: +44 (0) 208 194 9798 - e-mail: info-uk@typsa.com

**CENTRAL AND SOUTH AMERICA****BOLIVIA**

Calle Claudio Aliaga, 1367 - Edif. Rhesus - PH  
Zona San Miguel  
La Paz - Bolivia  
Tel: +591 765 60200 - psanmartin@typsa.com

**BRAZIL - ENGECORPS**

Alameda Tocantins, 125 - 12º Andar - Edificio West Side  
06455-020 - Alphaville Barueri - São Paulo - Brazil  
Tel: +55 11 21355252 - comercial@engecorps.com.br

**CHILE**

Avenida Ricardo Lyon, 222 - Piso 11  
Providencia - Santiago - Chile  
Tel: +56 2 233 52 289 - typsachile@typsa.cl

**DOMINICAN REPUBLIC**

Av. Gustavo Mejía Ricart, 102  
Edif. Corporativo 2010 - Piso 6 - Suite 602 - Piantini  
Santo Domingo - Dominican Republic  
Tel: +1 829 698 1035 - jmargumanez@typsa.es

**ECUADOR**

Calle Juan de Dios Haro Oe. 5-27 y Manuel Serrano  
Sector La Florida - Quito - Ecuador  
Tel: +593 996 198 704 - psanmartin@typsa.com

**PANAMA**

Av. Samuel Lewis con Calle 55  
Obarrio - P.H. SL 55 - Oficina 3301-3302  
Ciudad de Panamá - Panama  
Tel: +507 383 0303 - licitacionespan@typsa.com

**PARAGUAY**

Independencia Nacional, 811 (esq. Fulgencio R. Moreno)  
Edificio El Productor - Piso 7  
Asunción - Paraguay  
Tel: +595 981 400 854 - psanmartin@typsa.com

**PERU**

- Av. 28 de Julio, 1044 - 5º piso  
Miraflores - Lima - Peru  
Tel: +51 (1) 719 2645 / 719 2646 - typsaperu@typsa.com

**- ENVIRONMENTAL LABORATORY**

Calle Delta, 269 - Urb. Parque Industrial  
01 Callao - Peru  
Tel: +51 (1) 711 9753 - labperu@typsa.com

**URUGUAY**

Av. Gral Rivera 4430  
Montevideo - Uruguay  
Tel: +598 91 859 012 - psanmartin@typsa.com

**MIDDLE EAST****SAUDI ARABIA**

I-Office Building - Al Thumamah Road  
Ar Rabie District 3485 Building 4 - 1st Floor  
13316-8450 Riyadh - Saudi Arabia  
Tel: +966 11 407 9701 - arabia@typsa.com

**UNITED ARAB EMIRATES**

Office 211 GDP 6 Al Quoz Sheikh Zayed Road  
PO Box 52964 Dubai - UAE  
Tel: 971 4 286 8285 - dubai@typsa.com

**NORTH AMERICA****CANADA - TYP SA INC**

333 Bay Street - Suite 1440  
Toronto, ON - Canada M5H 2R2  
Tel: +1 437 776 3481 - canada@typsa.com

**UNITED STATES - TYP SA INC US****- Arizona**

501 N. 44th Street - Suite 300  
Phoenix - AZ 85008 - USA  
Tel: +1 602 454 0402 - us-info@typsa.us

181 S. Tucson Boulevard, Suite 103

Tucson - AZ 85716 - USA  
Tel: +1 602 454 0402 - us-info@typsa.us

**- California**

30 Executive Park - Suite 120  
Irvine - CA 92614 - USA  
Tel: +1 714 656 2805 - us-info@typsa.us

770 L Street, Suite 1250

Sacramento - CA 95814 - USA  
Tel: +1 602 454 0402 - us-info@typsa.us

**- Colorado**

1700 Lincoln Street - 17th Floor, Suite 113  
Denver - CO 80203 - USA  
Tel: +1 602 454 0402 - us-info@typsa.us

**MEXICO - MEXTYP SA**

Lago Alberto 442 - Piso 8 - Colonia Anahuac I Sección  
Miguel Hidalgo - C.P. 11320 - Ciudad de México  
Tel: +52 (55) 55 80 49 35 / 38 - mextypsa@mextypsa.mx



[www.typsa.com](http://www.typsa.com)

